

QCYC SUMMER SERIES 2025-2026

**INCORPORATING THE GOLD CUP AND CLUB CHAMPIONSHIP
SERIES**



COMBINED NOTICE OF RACE AND SAILING INSTRUCTIONS

V2 – issued 15/11/25

INTRODUCTION..... 2

SCHEDULE OF RACES 2

RULES 4

SAFETY CATEGORY 4

ADVERTISING 4

ELIGIBILITY 4

 ENTRY FEES 5

 OVERALL DIVISIONS..... 5

SCORING SYSTEM..... 5

NOTICES TO COMPETITORS & CHANGES TO THIS DOCUMENT 6

NIGHT RACE SERIES..... 6

SIGNALS MADE ASHORE..... 6

ORAL INSTRUCTIONS 6

RACE CHANNEL 6

COURSES..... 6

SHORTENED COURSES 7

CREW REGISTERS 7

LOGGING ON 7

START LINE 7

FINISH LINE..... 7

DECLARATIONS 8

TIME LIMIT..... 8

PROTEST 8

MARINE INCIDENT 8

 IDENTIFICATION OF MARKS 8

TROPHIES & TROPHY PRESENTATIONS 11

ANNEXURE A – COURSES 12

ANNEXURE C – PROTEST FORM 20

INTRODUCTION

Queensland Cruising Yacht Club's summer racing calendar begins in September with the Bribie Cup Yacht Race. Three races spread over September and October make up the Flag Officers Series. The second series of the calendar, the Bramble Bay series starts with two races in November, one in December and one in February. The Heritage Series commences in February with the Ken O'Brien Memorial Race, followed by the Pearl Channel Race in March and the Life Members Race in April. These eleven races combined make up the Club Championship competition for both monohulls and multihulls. Monohulls may also compete for the Gold Cup, which includes all the above races, plus the Night Series and Brisbane to Gladstone Yacht Race.

The Surf to City Yacht Race is hosted by the Club in February and is part of the Ocean Points Score competition, along with Brisbane to Gladstone Yacht Race. These events are covered by separate Notices of Race and Sailing Instructions, as is the Bribie Cup Yacht Race.

All races are open to non QCYC members however, only QCYC members are eligible for Championship or Gold Cup points. All races covered by this document start at 1100hrs in the vicinity of the mouth of Cabbage Tree Creek, except the Life Members Race which will start at 1000hrs. The start time for the night races is 1500Hrs in the vicinity of the Mud Island West Cardinal – refer to Night Races Series section.

SCHEDULE OF RACES

Date	EVENT DESCRIPTION	AS SAFETY CATEGORY	Flag Officers' Series	HERITAGE SERIES	BRAMBLE BAY SERIES	NIGHT SERIES	MONOHULL CLUB CHAMPIONSHIP/ MULTIHULL POINTSCORE	OCEAN POINTS	GOLD CUP
Saturday 6th/7th September 2025	QCYC Summer Series 24/25 CAREEL NATIONAL TITLES at QCYC								
Saturday 13th September 2025	Bribie Cup Yacht Race Season Opener Weekend - (QCYC Event)	5					1		1
Sunday 14th September 2025	Bribie Cup Yacht Race PRESENTATIONS Venue: QCYC 11:00am								
Saturday 20th September 2025	Rear Commodore Race (QCYC Flag Officers Series Race 1)	5	1				2		2
Saturday 27th September 2025	Vice Commodore Race (QCYC Flag Officers Series Race 2)	5	2				3		3
Saturday 4th October 2025	Kingfisher Bay Resort Night Race 1 (QCYC Start/Finish Boat)	5N				1			4
Saturday 4th/Monday 6th October 2025	Sail Paradise - (SYC Race Event) Venue: Southport Yacht Club								
Saturday/Sunday 10th/12th October 2025	St Helena Cup - (WMSC Race Event) Venue: WMSC	5							
Saturday 18th October 2025	Commodore Race (QCYC Flag Officers Series Race 3)	5	3				4		5
Saturday 1st November 2025	Bramble Bay Series Race 1	5			1		5		6
Saturday 8th November 2025	Kingfisher Bay Resort Night Series Race 2 (MBTBC Start/Finish Boat)	5N				2			7
Saturday 15th November 2025	Bramble Bay Series Race 2	5			2		6		8
Saturday 29th November 2025	Bramble Bay Series Race 3	5			3		7		9
Saturday 6th December 2025	Bramble Bay Series Race 4	5			4		8		10
Sunday 7th December 2025	QCYC Christmas Party								
Saturday 24th/26th January 2026	Tangalooma Plate Race/BBQ/Presentations Australia Day Weekender	5							
Saturday 31st January 2026	Kingfisher Bay Resort Night Race 3 (WMSC Start Finish Boat)	5N				3			11
Friday 6th February 2026	Surf to City Yacht Race Briefing (Venue: Southport Yacht Club)								
Saturday 7th February 2026 (H:1.21m @12:33)	Surf to City Yacht Race B2G 2025 Qualifier (QCYC SSSA Event Southport)	4 Uprated/5N						1	
Sunday 8th February 2026	Surf to City Yacht Race Presentations/Lunch (Venue: QCYC)								
Saturday 21st February 2026	Ken O'Brien Memorial (QCYC Heritage Series Race 1)	5		1			9		12
Saturday 28th February 2026	Kingfisher Bay Resort Night Race 4 (MBBC Start/Finish Boat)	5N				4			14
Saturday 7th March 2026	Pearl Channel Race (QCYC Heritage Series Race 2)	5		2			10		13
Friday 13th March 2026	Kingfisher Bay Resort Night Race PRESENTATIONS (QCYC)								
Saturday 28th March 2026	Life Members Race (QCYC Heritage Series Race 3)	5		3			11		15
Wednesday 1st April 2026	Brisbane to Gladstone Race Briefing Venue: TBA								
Friday 3rd April 2026	Brisbane to Gladstone (QCYC Ocean Race Event) Venue: PCSC Gladstone	3 Uprated						2	16
TBA After Winter Series Concludes	Summer and Winter Series Presentation Dinner: Drinks 6:00pm for 7:00pm Dinner								

Starting times for QCYC conducted races are generally 1100hrs

Night Races start at 1500hrs at the vicinity of the Mud Island West Cardinal Beacon.

SCORING

All competitors in all eligible races are awarded Club Championship, Pointscore and Gold Cup points. Entry for these competitions prior to the season commencing is not required. Yachts not eligible for the Brisbane to Gladstone Race will receive average points calculated for all races up to the B2G race. Yachts that enter and compete in the Brisbane to Gladstone Race will receive half points for the B2G.

DISCARDS

Flag Officers' and Heritage Series	0
Bramble Bay Series	1
Club Championship/Multihull Pointscore	3
Gold Cup	4

ENTRY FEES

Flag Officers' or Heritage Series	\$40
Bramble Bay Series	\$50
Individual race (excluding Bribie Cup, Surf to City or Brisbane to Gladstone)	\$20
Bribie Cup	\$50
Club Championship/Multihull Pointscore, (does not include entry fees for Bribie Cup Race)	\$110
Gold Cup - as per Club Championship plus Night Race Series. (does not include entry fees for Bribie Cup, Surf to City or Brisbane to Gladstone Race)	\$150
	See Other



Should a race be required to be postponed for any reason the race may be re-scheduled to the next available date as specified by and at the sole discretion of the race committee.

RULES

This series will be governed by the:

1. Current Racing Rules of Sailing (“RRS”) of World Sailing; 2025-2028 Version will apply to all individual races and series.
2. Notice of Race (NoR);
3. Sailing Instructions (SI);
4. Between sunset and sunrise, when a yacht cannot determine with certainty what tack the other yacht is on, she shall keep clear of that yacht.
5. Competitors are reminded that part of the definition of “room” includes taking into account the existing conditions (including visibility).
6. Whilst a yacht is operating under its engine the International Regulations for Prevention of Collision at Sea will replace the RRS.

The Organising Authority (QCYC Inc.) reserves the right to amend this document.

SAFETY CATEGORY

The Safety Category for races covered by this document are as indicated in the Summer Series Calendar, the safety category is as per the Australian Sailing Special Regulations Part 1 effective 1 July 2024.

*As per AS Special Regulation Rule 2.02.1, QCYC will require ALL boats to have a current Safety Audit for the applicable safety category to be eligible for entry. Safety audits must be signed off by an authorised Safety Auditor – self auditing is not permitted.

ADVERTISING

Advertising on a yacht shall comply with World Sailing Regulation 20 – Advertising Code

Yachts may be required to display bow decals and/or backstay flags supplied by the Organising Authority for the period of each race in the series.

ELIGIBILITY

To be eligible for acceptance each yacht shall:

1. Have fully completed the online entry form and paid the entry fee.
2. Supply an Australian Sailing Special Regulations Equipment Audit Form proving compliance with the safety requirements listed above.
3. Provide evidence of current Third Party and Public Liability insurance cover of not less than \$10million.

The Organising Authority reserves the right to refuse any entry.

ENTRIES

Entries for series and individual races are to be submitted online via the QCYC website and accompanied by the appropriate documents at least 24 hours prior to the warning signal of a race.

All crew must comply with RRS 21-24, Rule 46, i.e., be members of a club affiliated to Australian Sailing and have an Australian Sailing Number. Crew members who do not hold an Australian Sailing Number may apply for a Temporary Sail Pass. Please note, Temporary Sail Passes are limited to three per person, after which time QCYC Crew Membership must be applied for. Any fees paid for temporary passes will be deducted from membership application fees. Queries regarding membership should be directed to the QCYC office.

ENTRY FEES

ENTRY FEES	
Flag Officers or Heritage Series, 3 races	\$40
Bramble Bay Series, 4 races	\$50
Night Race Series	\$40
Individual race (excluding Bribie Cup, Surf to City or Brisbane to Gladstone)	\$20
Club Championship, 10 races (Does not includes entry fees for Bribie Cup Race)	\$110
Gold Cup - as per Club Championship plus Night Race Series. (Does not include entry fees for Bribie Cup or Brisbane to Gladstone Race) 14 races	\$150
Bribie Cup	\$50
QCYC Inter Club Challenge Race	\$40

OVERALL DIVISIONS

The following divisions may be used:

- Monohull PHRF
- Multihull PHRF

SCORING SYSTEM

The scoring system will follow the Low Point System.

Competitors that are QCYC members are awarded Club Championship, Pointscore and Gold Cup points for all eligible races.

Yachts not eligible for the Brisbane to Gladstone Race (B2G) will receive average points calculated for all races up to the B2G race. Yachts that enter and compete in the Brisbane to Gladstone Race will receive half points for the B2G.

DISCARDS	
Flag Officers & Heritage Series	0
Bramble Bay Series, Night Race Series	1
Club Championship / Multihull Pointscore	3
Gold Cup	4

NOTICES TO COMPETITORS & CHANGES TO THIS DOCUMENT

Notices to Competitors will be posted on the Summer Racing section of the QCYC website and emailed to all registered competitors.

NIGHT RACE SERIES

The QCYC Night Race Series is run concurrently with the Kingfisher Night Race Series.

The sailing instructions for the Kingfisher Night Series apply for these four races.

The Kingfisher Night Series sailing instructions are available as a separate document.

Entry for the Kingfisher Night Series is an independent arrangement and details are available elsewhere.

QCYC boats that do not enter the Kingfisher Night Series but enter QCYC Gold Cup or QCYC Night Series will follow the Sailing Instructions published for the Kingfisher Night Series as above.

DIVISION START TIMES

- The warning signal for all monohulls will be not before 1055hrs for all races (except the Life Members Race and the Night Race Series races).
- The warning signal for all monohulls in the Life Members Race will be not before 0955hrs.
- The warning signal for all multihulls will be five minutes after the monohull start signal.
- Races will be started in accordance with Rule 26

SIGNALS MADE ASHORE

Signals made ashore will be displayed on the flagstaff at the QCYC Clubhouse.

ORAL INSTRUCTIONS

Oral Instructions will be signified by displaying Code Flag L on the committee vessel.

Any oral instructions will be made over VHF Radio on the Race Channel. Entrants unable to receive the transmission shall come within hail and receive instructions.

RACE CHANNEL

The VHF race channel for all races is Ch77. Competitors are required to maintain a listening watch at all times during all races on this channel.

COURSES

Courses are described in Annexure A of this document.

The Committee vessel will display numeral pennants to correspond with the course number to be sailed, not later than the warning signal for the first start.

Courses 16, 17 and 18 have been designated for particular races within the Heritage Series. This does not exclude these courses being used for other races of the series. It also does not exclude the use of other courses for Heritage Series races if weather conditions on the day are not suitable or appropriate in the interests of safety and fair competition.

SHORTENED COURSES

RRS Rule 32 is amended to read as follows:

Courses 1 and 3

- The course may be shortened at the completion of any lap at the rounding of the start buoy on any given lap of the course.
- This will be signified by the committee vessel lowering code flag "S" as each yacht crosses the line between the committee vessel and the course mark.

All other courses may be shortened as follows:

- The race committee may alter or shorten the course at any time and for any reason during the race.
- The course may be altered or shortened at any mark of the course.
- In the event of a shortened course yachts are to take their own finish time when abeam of and within 100m of the designated mark that is the new finish mark.
- The mark is to be left on the side as designated in the initial course description.
- A shortened or altered course will be announced by VHF Radio call to all competitors
- Failure of a competitor to acknowledge or receive the notice of course alteration or shortening will not be grounds for redress.

CREW REGISTERS

Crew Registers must be submitted prior to the start of races. Crew Register Forms are available to download on the race website.

LOGGING ON

Competitors must log on with the Start Boat 15 minutes prior to the start of the first race of each race day.

START LINE

The start line for all courses is an imaginary line between the start buoy (pink buoy) at the port end of the line and the committee vessel at the starboard end of the line.

The start line is to be crossed in the direction to the first mark of the course. The start line will generally be aligned to be perpendicular (approximately) to the course to the first mark of the course.

The committee vessel may attempt to notify premature starters on the Race Channel approximately 1 minute after the start signal. Failure of the committee vessel to contact premature starters or failure of premature starters receiving this communication will not be grounds for redress.

FINISH LINE

The Finish Line will be between the START buoy at the starboard end of the line and the Committee vessel at the port end of the line.

If the Committee vessel is not on station then the finish line is between the START buoy at the starboard end of the line and the Cabbage Tree Green Outer Entrance Beacon at the port end of the line.

Yachts are to take their own time and text to **0412 471794** immediately after finishing.

Competitors will be notified before the start whether a finish boat will be on station or not.

Note that the start buoy will always be the **STARBOARD** end of the finish line except for **COURSES 1 and 2**.

The last boat is to pick up the start buoy after finishing and return it to the club.

DECLARATIONS

Declarations are to be made immediately after finishing a race via SMS message to 0412 471 794. The following details are to be provided:

“Yacht Name” , “Finish Time” , “Yacht Behind was _____” , “Yacht in front was _____” . “Any applicable notes”

Ensure your finish time is accurate and corrected to Eastern Standard Time.

As soon as practicable after finishing, the details above should also be emailed to raceentries@qcy.com.au

TIME LIMIT

The time limit for all courses is official sunset as given by timeanddate.com for the day of the applicable race.

PROTEST

Protests must be properly made in accordance with the RRS.

Immediately after finishing a boat is required to contact the Race Officer and inform them of its intention to protest or request for redress.

Protest forms are available on the QCYC website <https://www.qcyc.com.au/club-sailing-racing/summer-series-gold-cup-and-club-championship/> . Protests and requests for redress or reopening shall be delivered by email to raceentries@qcy.com.au by midnight the day of the race. Skippers will advise the Race Officer by SMS text message to 0428 882876 that they have lodged a protest or request for redress.

Protests will be conducted as laid down in the RRS. A mediation hearing will be held for all protests that allege an infringement of Part 2 of the Rules. A Mediator will be appointed by the Race Committee. Protests that are the subject of mediation may be withdrawn.

MARINE INCIDENT

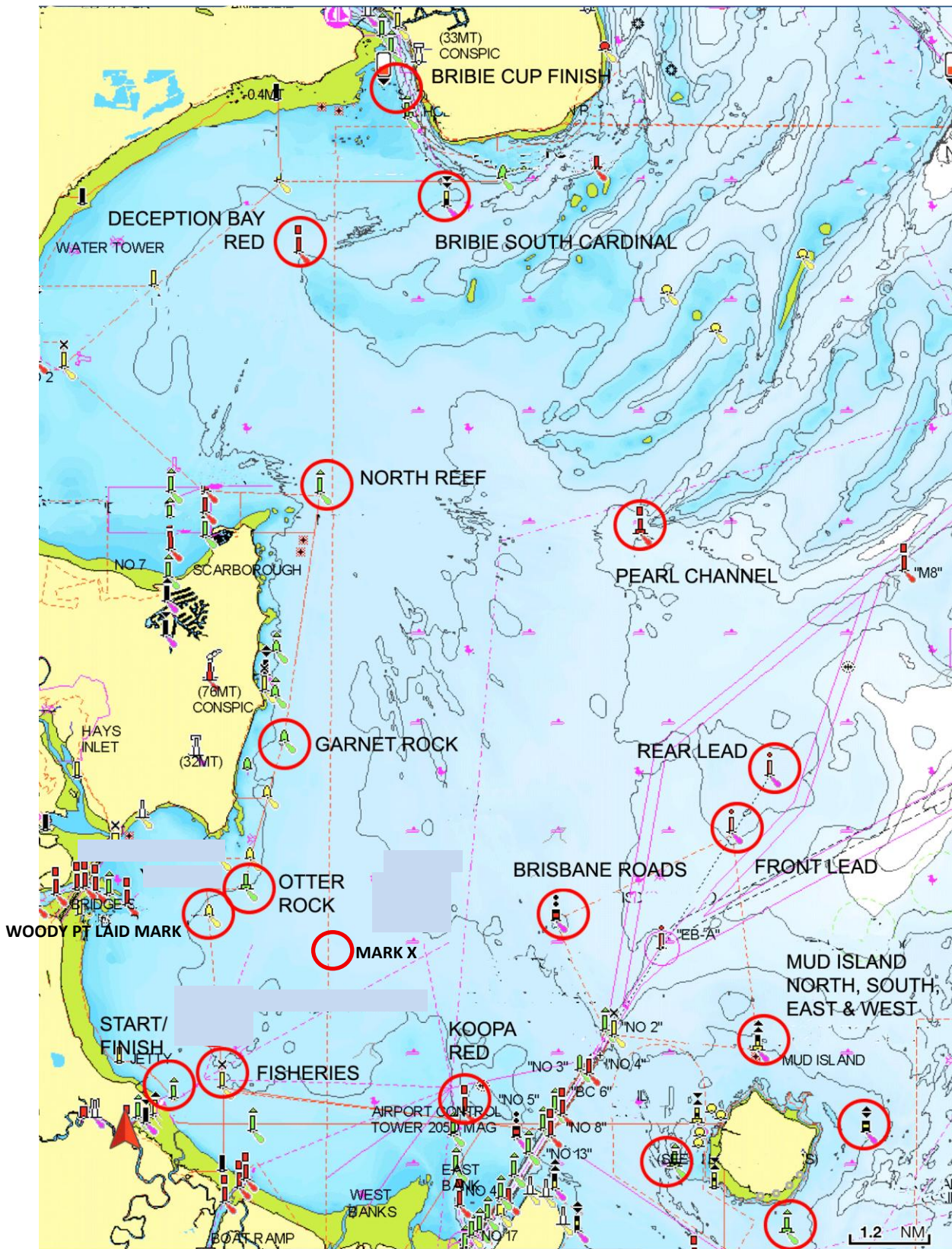
Should a major marine incident occur during racing, the owners of the yacht/s involved will need to complete a Marine Incident Report and lodge that to a Shipping Inspector within 48 hours. Further details as well as the form can be found and downloaded for completion from: [Marine incidents \(Maritime Safety Queensland\) \(msq.qld.gov.au\)](http://msq.qld.gov.au)

IDENTIFICATION OF MARKS

Mark	Description	Approx. Position
Pearl Channel Buoy	Port Lateral Buoy F1 R 2.5s	27 11 53S 153 12 99E
North Reef Beacon	Starboard Lateral Tripod Beacon F1 G 4s	27 11 01S 153 07 99E
Otter Rock Buoy	Starboard Lateral Buoy F1 G 2.5s	27 16 58S 153 06 77E
Woody Point Laid Mark	Laid Yellow Buoy (approx. 600mm diameter) – located SW of Otter Rock Buoy	27 17 24S 153 06 41E
Brisbane Roads Buoy	Isolated Danger Mark F1(2) 6s	27 17 08S 153 11 71E
Garnet Rock Buoy	Starboard Lateral Buoy F1 G 6s	27 14 51S 153 07 39E
Deception Bay Red	Port Lateral Buoy F1 R3s	27 07 60S 153 07 65E
Bribie South Cardinal	South Cardinal Beacon Q6 LF115s	27 06 95S 152 09 98E
Rear Sea Lead	Outer Measured Mile Beacon	27 14 97S 153 15 10E
Front Sea Lead	Inner Measured Mile Beacon	27 15 82S 153 14 50E
Koopa Channel Red	Port Lateral Beacon F1 R2.5s	27 19 75S 153 10 27E

Mark "X"	Laid Yellow Inflatable Buoy – located approx. 1.9NM NE of Fisheries Buoy	27 17 99S 153 08 01E
Fisheries Buoy	Laid Pink Buoy	27 19 41S 153 06 44E

NB: These details are to assist with identification of marks only and must not be used for navigation purposes. Any errors or omissions contained in the descriptions and positions given are not grounds for redress.



TROPHIES & TROPHY PRESENTATIONS

Trophies and prizes for individual races, series and season results will be awarded at the sole discretion of the race committee depending on entrant numbers.

Prizes not collected during the presentation will not be available for collection at a later date.

Trophies and prizes will be presented at a location and time to be decided.

RESPONSIBILITY

All those taking part in this race do so at their own risk and responsibility. QCYC Inc. take no responsibility for the safety of competitors or the seaworthiness of a yacht whose entry is accepted or the sufficiency or adequacy of its equipment. The Race Committee and QCYC Inc. reserve the right under World Sailing Rule 76.1 to refuse any entry.

RESPONSIBILITY OF PERSON IN CHARGE

The safety of a boat and her crew is the sole and inescapable responsibility of the person in charge who shall do their best to ensure that the boat is fully found, thoroughly seaworthy and manned by an experienced crew who have undergone appropriate training and are physically fit to face bad weather. He/she must be satisfied as to the soundness of hull, spars, rigging, sails, and all gear. He/she shall ensure that all safety equipment is properly maintained and stowed and that the crew know where it is kept and how it is to be used. He/she shall also nominate a person to take over the responsibilities of the Person in Charge in the event of his/her incapacitation.

Neither the establishment of the AS Special Regulations, their use by race organizers, or the inspection of a boat under these Special Regulations in any way limits or reduces the complete and unlimited responsibility of the person in charge.

The attention of every person is drawn to Special Regulation 1.02 and also to the importance of having suitable and adequate personal insurance. It is the responsibility of owners/ skippers/ charterers to ensure their crew have had this drawn to their attention.

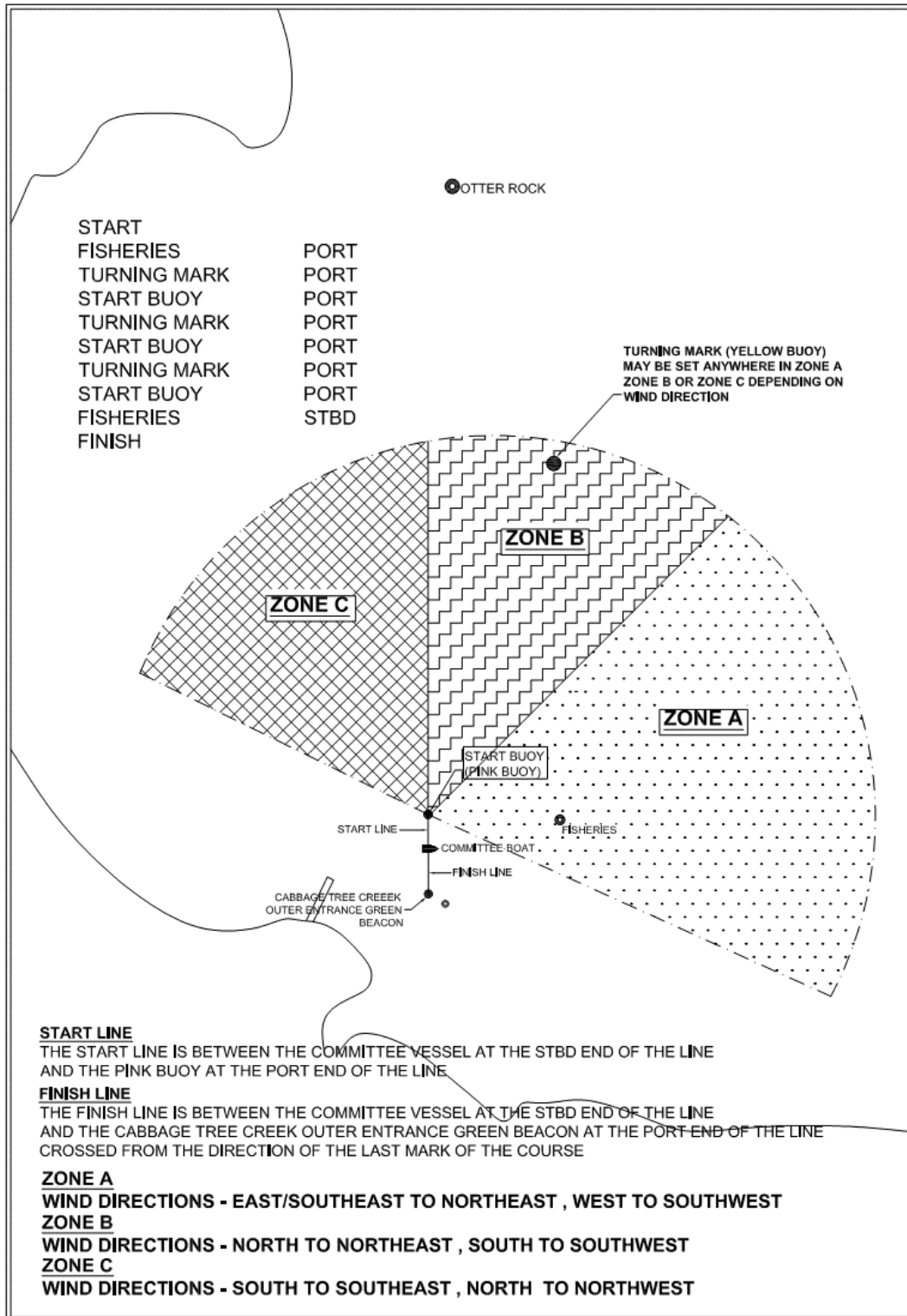
DISCLAIMER

All those taking part in the races do so at their own risk and responsibility. Crew members are deemed to have acknowledged this, and released the Organising Authority, Sponsors and their respective officers, employees, volunteers, and members, from all liability. Specific attention is drawn to RRS Fundamental Rule 3, which states:

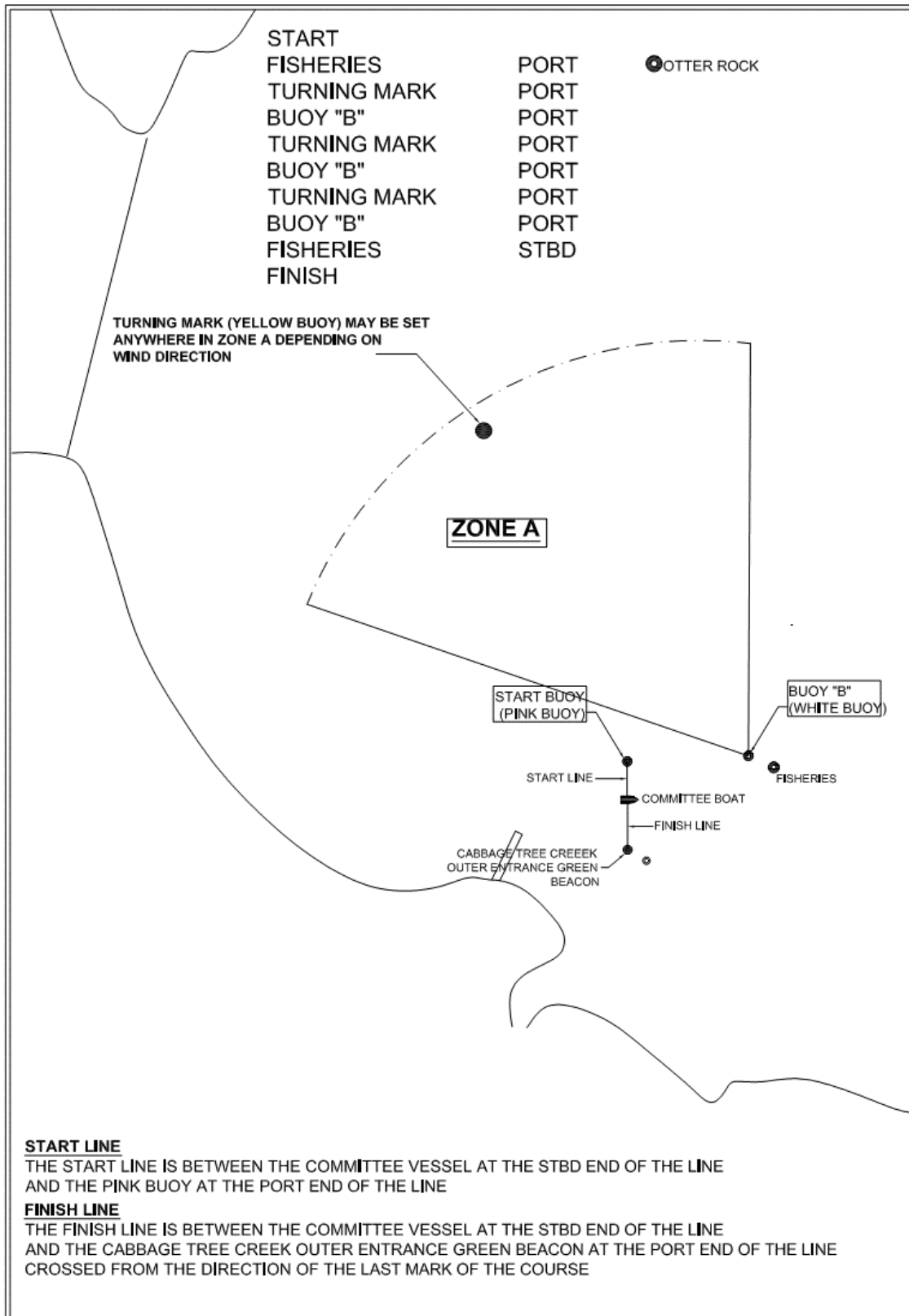
“The responsibility for a boat’s decision to participate in a cruising event or race, or to continue racing is hers alone”.

ANNEXURE A – COURSES

COURSE NUMBER 1 – Numeral Pennant 1



COURSE NUMBER 2 – Numeral Pennant 2



COURSE NUMBER 3 – Numeral Pennant 3

From Start
 Otter Rock Buoy Leave to STBD
 Start Buoy Leave to STBD
 Otter Rock Buoy Leave to STBD
 To the FINISH

COURSE NUMBER 4 – Numeral Pennant 4

From Start
 Otter Rock Buoy Leave to STBD
 Brisbane Road Buoy Leave to STBD
 To the FINISH

COURSE NUMBER 5 – Numeral Pennant 5

From Start
 Brisbane Road Buoy Leave to PORT
 Otter Rock Buoy Leave to PORT
 To the FINISH

COURSE NUMBER 6 – Numeral Pennant 6

From Start
 Brisbane Road Buoy Leave to STBD
 Start Buoy Leave to STBD
 Otter Rock Buoy Leave to STBD
 To the FINISH

COURSE NUMBER 7 – Numeral Pennant 7

From Start
 Woody Pt Laid Mark Leave to STBD
 Fisheries Buoy Leave to STBD
 Woody Pt Laid Mark Leave to STBD
 Fisheries Buoy Leave to STBD
 To the FINISH

COURSE NUMBER 8 – Numeral Pennant 8

From Start
 Otter Rock Buoy Leave to STBD
 Brisbane Road Buoy Leave to PORT
 North Reef Beacon Leave to PORT
 Garnet Rock Buoy Leave to STBD
 Otter Rock Buoy Leave to STBD
 To the FINISH

COURSE NUMBER 9 – Numeral Pennant 9

From Start
 Otter Rock Buoy Leave to PORT
 Garnet Rock Buoy Leave to PORT
 North Reef Beacon Leave to STBD
 Brisbane Road Buoy Leave to STBD
 Otter Rock Buoy Leave to PORT
 To the FINISH

COURSE NUMBER 12 – Numeral Pennant 1 over 2

From Start
 Brisbane Road Buoy Leave to PORT
 Pearl Channel Buoy Leave to PORT
 Start Buoy Leave to PORT
 Brisbane Road Buoy Leave to STBD
 To the FINISH

COURSE NUMBER 13 – Numeral Pennant 1 over 3

From Start
 Brisbane Road Buoy Leave to PORT
 Otter Rock Buoy Leave to STBD
 Pearl Channel Buoy Leave to STBD
 To the FINISH

COURSE NUMBER 14 – Numeral Pennant 1 over 4

From Start
 Pearl Channel Buoy Leave to PORT
 Fisheries Buoy Leave to PORT
 Brisbane Road Buoy Leave to STBD
 To the FINISH

COURSE NUMBER 15 – Numeral Pennant 1 over 5

From Start
 Brisbane Road Buoy Leave to STBD
 Start Buoy Leave to STBD
 Brisbane Road Buoy Leave to STBD
 Start Buoy Leave to STBD
 To the FINISH

COURSE NUMBER 16 – Ken O'Brien Memorial Course – Numeral Pennant 1 over 6

From Start
 Brisbane Road Buoy Leave to PORT
 Front Sea Lead Leave to PORT
 Brisbane Road Buoy Leave to PORT

Koopa Channel Red Leave to STBD
 Otter Rock Buoy Leave to PORT
 To the FINISH

COURSE NUMBER 17 – Life Members Course – Numeral Pennant 1 over 7

From Start
 Mud Island Round in either direction observing all lateral marks and beacons
 To the FINISH

All yachts with VHF radio are to monitor channel 12 when approaching the Brisbane River – ENTRANCE CHANNEL from both directions and whilst crossing the channel for any shipping movements and for communications with commercial traffic.

NOTE: All yachts must keep clear of commercial vessels when transiting the Brisbane River ENTRANCE CHANNEL at all times. Failure to do so will result in instant disqualification and possible further action from Queensland Transport official channels.

COURSE 18 – Pearl Channel Course – Numeral Pennant 1 over 8

From Start
 Pearl Channel Buoy (South West Spit) Leave to STBD
 Rear Sea Land (Outer Measured Mile) Leave to STBD
 To the FINISH

COURSE 19 – Numeral Pennant 1 over 9

From Start
 Fisheries Buoy Leave to PORT
 Brisbane Road Buoy Leave to STBD
 Fisheries Buoy Leave to STBD
 Mark “X” Leave to STBD
 Fisheries Buoy Leave to STBD
 Otter Rock Buoy Leave to STBD
 Mark X Leave to STBD
 Fisheries Buoy Leave to STBD
 To the FINISH

COURSE 21 – Numeral Pennant 2 over 1

From Start
 Fisheries Buoy Leave to PORT
 Mark “X” Leave to PORT
 Otter Rock Buoy Leave to STBD
 Brisbane Road Buoy Leave to STBD
 Fisheries Buoy Leave to STBD
 Otter Rock Buoy Leave to STBD
 Mark X Leave to STBD
 Fisheries Buoy Leave to STBD
 To the FINISH

COURSE NUMBER 23 – Numeral Pennant 2 over 3

From Start
 Otter Rock Buoy Leave to STBD
 Mark "X" Leave to STBD
 Otter Rock Buoy Leave to STBD
 Mark "X" Leave to STBD
 Otter Rock Buoy Leave to STBD
 Mark X Leave to STBD
 To the FINISH

COURSE NUMBER 24 – Numeral Pennant 2 over 4

From Start
 Fisheries Buoy Leave to PORT
 Mark "X" Leave to STBD
 Fisheries Buoy Leave to STBD
 Mark "X" Leave to STBD
 Fisheries Buoy Leave to STBD
 Otter Rock Buoy Leave to STBD
 Fisheries Buoy Leave to STBD
 To the FINISH

COURSE NUMBER 25 – Numeral Pennant 2 over 5

From Start
 Fisheries Buoy Leave to PORT
 Mark "X" Leave to PORT
 Brisbane Road Buoy Leave to PORT
 Mark "X" Leave to STBD
 Otter Rock Buoy Leave to PORT
 To the FINISH

COURSE NUMBER 26 – Numeral Pennant 2 over 6

From Start
 Fisheries Buoy Leave to PORT
 Otter Rock Buoy Leave to STBD
 Mark "X" Leave to STBD
 Fisheries Buoy Leave to STBD
 Otter Rock Buoy Leave to STBD
 Mark X Leave to STBD
 Fisheries Buoy Leave to STBD
 To the FINISH

COURSE NUMBER 27 – Numeral Pennant 2 over 7

From Start
 Fisheries Buoy Leave to PORT
 Mark "X" Leave to PORT
 Otter Rock Buoy Leave to PORT
 Fisheries Buoy Leave to PORT
 Mark "X" Leave to PORT
 Otter Rock Buoy Leave to PORT
 Start Buoy Leave to PORT
 Fisheries Buoy Leave to STBD
 To the FINISH

COURSE NUMBER 28 – Numeral Pennant 2 over 8

From Start
 Otter Rock Buoy Leave to STBD
 Brisbane Road Buoy Leave to STBD
 Start Buoy Leave to STBD
 Otter Rock Buoy Leave to STBD
 To the FINISH

COURSE NUMBER 29 – Numeral Pennant 2 over 9

From Start
 Brisbane Road Buoy Leave to PORT
 Otter Rock Buoy Leave to PORT
 Start Buoy Leave to PORT
 Otter Rock Buoy Leave to PORT
 To the FINISH

COURSE NUMBER 31 – Numeral Pennant 3 over 1

From Start
 Brisbane Road Buoy Leave to STBD
 Start Buoy Leave to STBD
 Brisbane Road Buoy Leave to STBD
 To the FINISH

COURSE NUMBER 32 – Numeral Pennant 3 over 2

From Start
 Fisheries Buoy Leave to PORT
 Brisbane Road Buoy Leave to STBD
 Koopa Channel Red Leave to STBD
 Otter Rock Buoy Leave to PORT
 To the FINISH

COURSE NUMBER 34 – Numeral Pennant 3 over 4

From Start
 Brisbane Road Buoy Leave to STBD
 Koopa Channel Red Leave to STBD
 To the FINISH

COURSE NUMBER 35 – Numeral Pennant 3 over 5

From Start

Brisbane Road Buoy Leave to STBD

Koopas Channel Red Leave to STBD

Brisbane Road Buoy Leave to STBD

To the FINISH

COURSE NUMBER 36 – Numeral Pennant 3 over 6

From Start

Woody Pt Laid Mark Leave to STBD

Koopas Channel Red Leave to STBD

To the FINISH

COURSE NUMBER 37 – Numeral Pennant 3 over 7

From Start

Fisheries Buoy Leave to PORT

Otter Rock Buoy Leave to STBD

Koopas Channel Red Leave to STBD

Otter Rock Buoy Leave to PORT

To the FINISH

COURSE NUMBER 38 – Numeral Pennant 3 over 8

From Start

Fisheries Buoy Leave to PORT

Otter Rock Buoy Leave to STBD

Koopas Channel Red Leave to PORT

Brisbane Road Buoy Leave to PORT

To the FINISH

COURSE NUMBER 39 – Numeral Pennant 3 over 9

From Start

Fisheries Buoy Leave to PORT

Otter Rock Buoy Leave to STBD

Brisbane Road Buoy Leave to STBD

Koopas Channel Red Leave to STBD

To the FINISH

