



2021-2022

CLUB CHAMPIONSHIP & MULTIHULL POINTSCORE



SKIMMER
GOLD CUP WINNER – 2020-2021

NOTICE OF RACE &
SAILING INSTRUCTIONS



ELLS BELLS
CLUB CHAMPION – 2020-2021

SUMMER RACING

NOTICE OF RACE and SAILING INSTRUCTIONS combined for the Club Championship and Pointscore (excluding the Bribie Cup)

INTRODUCTION

Queensland Cruising Yacht Club's summer racing calendar begins in September with the Bribie Cup. Three races spread over September, October & November make up the Flag Officers Series. The second series of the calendar, the Bramble Bay series starts in November with one race a month through to February. The Heritage Series, held in March made up of the Ken O'Brien Memorial, Pearl Channel and Life Members Races, finishes the year. These eleven races combined make up the Club Championship competition for both monohulls and multihulls. Monohulls may also enter the Gold Cup competition which includes all the above, plus the Night Series and Brisbane to Gladstone Yacht Race.

The Surf to City Yacht Race is hosted by the Club in January but is not part of the summer series races. All races are open to non QCYC members however, non QCYC members are not eligible for Championship, Pointscore or Gold Cup placings.

This document covers all races in the Monohull Club Championship/Multihull Pointscore series except the Bribie Cup.

The Night Race Series is covered by the NOR and SI's issued for the series and are available on the club website.

SCHEDULE OF RACES

Q.C.Y.C. 2021/2022 SUMMER SERIES SAILING CALENDAR									
Date	EVENT DESCRIPTION	AS SAFETY CATEGORY	COMMODORES SERIES	HERITAGE SERIES	BRAMBLE BAY SERIES	NIGHT SERIES	MONOHULL CLUB CHAMPIONSHIP/ MULTIHULL POINTSCORE	OCEAN POINTS	GOLD CUP
Saturday 4th September 2021	QCYC Summer Series 20/21 Season Opener Launch								
Saturday 18th September 2021	Bribie Cup Yacht Race (QCYC Inter Club Race Event)	5	1				1		1
Sunday 19th September 2021	QCYC Inter Club Challenge Race (in association with MBBC)	5							
Saturday 25th September 2021	Rear Commodores Race	5					2		2
Saturday/Sunday 9th/10th October 2021	St Helena Cup - WMYC (Inter Club Race Event)	5							
Sunday 17th October 2021	Vice Commodores Race	5	2				3		3
Saturday 23rd October 2021	Kingfisher Bay Resort Night Series Race 1	5N				1			4
Friday 29th October to 1st November 2021	Vintage Yacht Regatta Long Weekend	6							
Saturday 6th November 2021	Commodores Race	5	3				4		5
Saturday 13th November 2021	Bramble Bay 1	5			1		5		6
Saturday 20th November 2021	Kingfisher Bay Resort Night Series Race 2	5N				2			7
Saturday 4th December 2021	QCYC Club Christmas Party								
Saturday 11th December 2021	Bramble Bay 2	5			2		6		8
Tuesday 28th December 2021	Brisbane to Southport Yacht Race (Inter Club Race Event)								
Monday 3rd to Thursday 6th January 2022	Sail Paradise Southport Yacht Club (Inter Club Race Event)								
Saturday 15th January 2022	Bramble Bay 3	5			3		7		9
Friday 21st January 2022	Surf to City Yacht Race Briefing (Southport Yacht Club)								
Saturday 22nd January 2022	Surf to City Yacht Race (QCYC Inter Club Race Event)	3/5N						1	
Sunday 23rd January 2022	Surf to City Yacht Race Presentations and Lunch								
Wednesday 26th January 2022	Australia Day BBQ - all welcome								
Saturday 29th/Sunday 30th January 2022	Tangalooma Plate Cruise in Company - ALL QCYC boats are welcome!								
Saturday 12th February 2022	Bramble Bay 4	5			4		8		10
Saturday 19th February 2022	Kingfisher Bay Resort Night Series Race 3	5N				3			11
Saturday 26th February 2022	Ken O'Brien Memorial (QCYC Heritage Series Race 1)	5		1			9		12
Saturday 5th March 2022	Pearl Channel Race (QCYC Heritage Series Race 2)	5		2			10		13
Saturday 12th March 2022	Fairway Challenge - Moreton Bay Boat Club (Inter Club Race Event)	3/5N						2	
Saturday 19th March 2022	Kingfisher Bay Resort Night Series Race 4	5N				4			14
Saturday 26th March 2022	Life Members Race (QCYC Heritage Series Race 3)	5		3			11		15
Friday 15th April 2022	Brisbane to Gladstone (QCYC Inter Club Race Event)	3 Upgraded						3	16

All races covered by this document start at 1100hrs in the vicinity of the mouth of Cabbage Tree Creek except the Life Members Race which will start at 1000hrs

Should a race be required to be postponed for any reason the race may be re-scheduled to the next available date as specified by and at the sole discretion of the race committee.

RULES

This series will be governed by the:

1. Current Racing Rules of Sailing ("RRS") of World Sailing; 2021-2024 Version will apply to all individual races and series.
2. Notice of Race (NoR);
3. Sailing Instructions (SI);
4. Between sunset and sunrise, when a yacht cannot determine with certainty what tack the other yacht is on, she shall keep clear of that yacht.
5. Competitors are reminded that part of the definition of "room" includes taking into account the existing conditions (including visibility).
6. Whilst a yacht is operating under its engine the International Regulations for Prevention of Collision at Sea will replace the RRS.

The Organising Authority (QCYC Inc.) reserves the right to amend this document.

SAFETY CATEGORY

The Safety Categories for races covered by this document is Cat 5 and Cat 5N of the 2021-2024 Australian Sailing Special Regulations Part I of the Racing Rules of Sailing. Note: Other races within the Gold Cup operate under different Category levels.

*As per AS Special Regulation Rule 2.02.1, QCYC will require ALL boats to be safety audited prior to racing. This can be arranged via QCYC for an appointment to inspect your vessel with sufficient notice.

ADVERTISING

Advertising on a yacht shall comply with World Sailing Regulation 20 – Advertising Code

Yachts may be required to display bow decals and/or backstay flags supplied by the Organising Authority for the period of each race in the series.

ELIGIBILITY

To be eligible for acceptance each yacht shall:

1. Have fully completed the online entry form.
2. Paid the entry fee via EFT, Credit Card, Cash or Cheque.
3. Supply an Australian Sailing Special Regulations Equipment Audit Form proving compliance with the safety requirements listed above.
4. Have current Public Liability and Third-Party insurance cover of not less than \$10,000,000 (ten million dollars).

The Organising Authority reserves the right to refuse any entry.

ENTRIES

Entries for both series and individual races are to be submitted online via the QCYC website and accompanied by the appropriate documents at any time prior to the warning signal of a race.

All competitors in eligible races are awarded Series Points, Club Championship Points and Gold Cup Points as applicable. Entry for these competitions prior to the series/season commencing is not required.

To assist owners and crew to comply with RRS 46, QCYC will adapt Sailpass during the season with those requiring an ASN being able to sign up guest crew on the morning of each event via the Sailing Office prior to 9:15am.

Night Race Series: The Kingfisher Bay Resort Night Race Series is a stand-alone series organised by a combined committee of Brisbane based sailing clubs including QCYC, WMSC, RQYS and MBBC. Yachts that wish to enter this series must enter via the Kingfisher Night Race Series entry system and pay the applicable fees. QCYC yachts may race the night race series races for QCYC pointscore by entering the QCYC Night Series and the QCYC entry system. All night races 1 to 4 are to be sailed under the NOR, SI and Aquatic Events Permit issued for and by the Kingfisher Bay Resort Night Series organising authority. These documents will be available on the QCYC website.

ENTRY FEES

ENTRY FEES	
Flag Officers or Heritage Series	\$30
Bramble Bay Series	\$40
Kingfisher Bay Resort Night Race Series	\$40
Individual race (excluding Bribie Cup, Surf to City or Brisbane to Gladstone)	\$15
Club Championship / Multihull Pointscore, (Does not includes entry fees for Bribie Cup Race)	\$80
Gold Cup - as per Club Championship plus Night Race Series. (Does not include entry fees for Bribie Cup, Surf to City or Brisbane to Gladstone Race)	\$110
Bribie Cup	\$40
QCYC Inter Club Challenge Race (in association with MBBC)	\$30

OVERALL DIVISIONS

The following divisions may be used:

- Monohull AMS & PHRF
- Multihull PHRF

SCORING SYSTEM

The scoring system will follow the Low Point System of Appendix A

All competitors that are QCYC members in all eligible races are awarded Club Championship, Pointscore and Gold Cup points. Entry for these competitions prior to the season commencing is not required.

Yachts not eligible for the Brisbane to Gladstone Race will receive average points calculated for all races up to the B2G race. Yachts that enter and compete in the Brisbane to Gladstone Race will receive half points for the B2G.

DISCARDS	
Flag Officers & Heritage Series	0
Bramble Bay Series & Kingfisher Bay Resort Night Series	1
Club Championship / Multihull Pointscore	3
Gold Cup	4

NOTICES TO COMPETITORS & CHANGES TO THIS DOCUMENT

Notices to Competitors will be posted on the Summer Racing section of the QCYC website and emailed to all registered competitors. These may also be posted on the club notice board.

DIVISION START TIMES

- The warning signal for all monohulls will be not before 1055hrs for all races except the Life Members Race and Night Series Races 1 to 4
- The warning signal for all monohulls in the Night Series Races is 1455hrs (refer to separate NOR for confirmation and start/finish details)
- The warning signal for all monohulls in the Life Members Race will be not before 0955hrs
- The warning signal for all multihulls will be five minutes after the monohull start signal
- Races will be started in accordance with Rule 26

SIGNALS MADE ASHORE

Signals made ashore will be displayed on the flagstaff at the QCYC Clubhouse.

ORAL INSTRUCTIONS

Oral Instructions will be signified by displaying Code Flag L on the committee vessel.

Any oral instructions will be made over VHF Radio on the Race Channel. Entrants unable to receive the transmission shall come within hail and receive instructions.

RACE CHANNEL

The VHF race channel for all races is Ch77. Competitors are required to maintain a listening watch at all times during all races on this channel.

COURSES

Courses are described in Annexure A of this document.

The Committee vessel will display numeral pennants to correspond with the course number to be sailed, not later than the warning signal for the first start.

Courses 16, 17 and 18 have been designated for particular races within the Heritage Series. This does not exclude these courses being used for other races of the series. It also does not exclude the use of other courses for Heritage Series races if weather conditions on the day are not suitable or appropriate in the interests of safety and fair competition.

SHORTENED COURSES

RRS Rule 32 is amended to read as follows:

Courses 1 and 3

- The course may be shortened at the completion of any lap at the rounding of the start buoy on any given lap of the course.
- This will be signified by the committee vessel lowering code flag "S" as each yacht crosses the line between the committee vessel and the course mark.

All other courses may be shortened as follows:

- The race committee may alter or shorten the course at any time and for any reason during the race.
- The course may be altered or shortened at any mark of the course.
- In the event of a shortened course yachts are to take their own finish time when abeam of and within 100m of the designated mark that is the new finish mark.
- The mark is to be left on the side as designated in the initial course description.
- A shortened or altered course will be announced by VHF Radio call to all competitors
- Failure of a competitor to acknowledge or receive the notice of course alteration or shortening will not be grounds for redress.

LOGGING ON

Competitors must log on with the Start Boat 15 minutes prior to the start of the first race of each race day.

START LINE

The start line for all courses is an imaginary line between the start buoy (pink buoy) at the port end of the line and the committee vessel at the starboard end of the line

The committee vessel may attempt to notify premature starters on the Race Channel approximately 1 minute after the start signal. Failure of the committee vessel to contact premature starters or failure of premature starters receiving this communication will NOT be grounds for redress.

FINISH LINE

The Finish Line will be as outlined in Annexure B. Competitors will be notified before the start whether a finish boat will be on station or not.

DECLARATIONS

Declarations are to be made immediately after finishing a race via SMS message. The following details are to be provided:

"Yacht Name", "Finish Time", "Yacht Behind was _____", "Yacht in front was _____". "Any applicable notes"

Ensure your finish time is accurate and corrected to Eastern Standard Time.

SMS messages are to be sent to 0412 471 794.

As soon as practicable after finishing, the details above should also be emailed to raceentries@qcy.com.au

TIME LIMIT

The time limit for all courses (except Kingfisher Bay Resort Night Races 1 to 4 and the Brisbane to Gladstone Yacht Race) is official sunset as given by timeanddate.com for the day of the applicable race.

PROTEST

Protests must be properly made in accordance with the RRS. Protest forms should be accompanied by a protest fee of \$50.00 and lodged with a QCYC Race Officer within one hour of finishing.

Protests will be conducted as laid down in the RRS. A mediation hearing will be held for all protests that allege an infringement of Part 2 of the Rules. A Mediator will be appointed by the Race Committee. Protests that are the subject of mediation may be withdrawn.

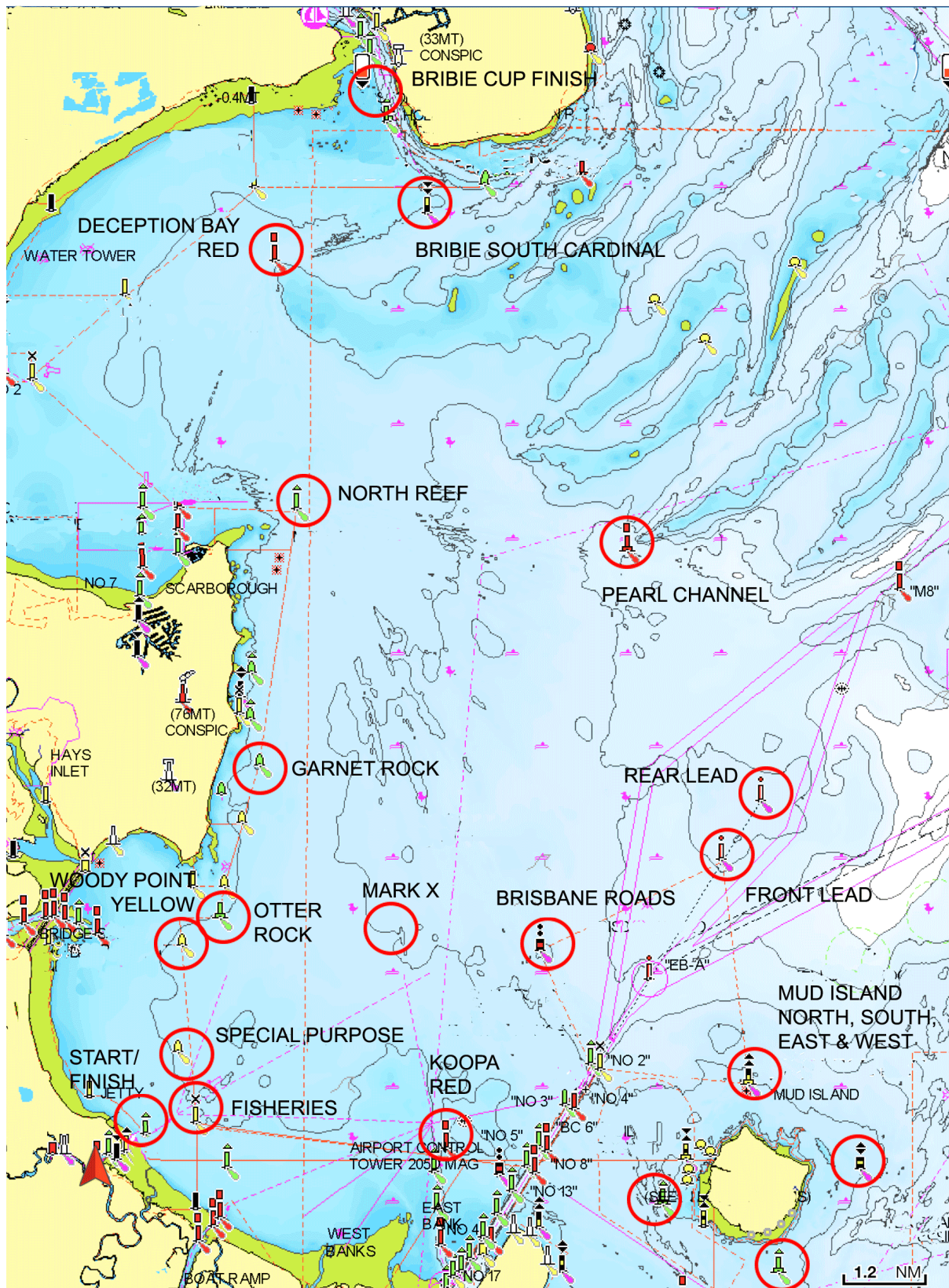
MARINE INCIDENT

Should a major marine incident occur during racing, the owners of the yacht/s involved will need to complete a Marine Incident Report and lodge that to a Shipping Inspector within 48 hours. Further details as well as the form can be found and downloaded for completion from: [Marine incidents \(Maritime Safety Queensland\) \(msg.qld.gov.au\)](http://msg.qld.gov.au)

IDENTIFICATION OF MARKS

Mark	Description	Approx. Position
Fisheries Beacon	Special Yellow Mark Fl Y 3s	27 19 41S 153 06 44E
Pearl Channel Buoy	Port Lateral Buoy Fl R 2.5s	27 11 53S 153 12 99E
North Reef Beacon	Starboard Lateral Tripod Beacon Fl G 4s	27 11 01S 153 07 99E
Otter Rock Buoy	Starboard Lateral Buoy Fl G 2.5s	27 16 58S 153 06 77E
Woody Point Yellow	Yellow Buoy (Fl Y3s) SW of Otter Rock Beacon	27 16 97S 153 06 22E
Brisbane Roads Buoy	Isolated Danger Mark Fl(2) 6s	27 17 08S 153 11 71E
Garnet Rock Buoy	Starboard Lateral Buoy Fl G 6s	27 14 51S 153 07 39E
Deception Bay Red	Port Lateral Buoy Fl R3s	27 07 60S 153 07 65E
Bribie South Cardinal	South Cardinal Beacon Q6 LFl 15s	27 06 95S 152 09 98E
Rear Sea Lead	Outer Measured Mile Beacon	27 14 97S 153 15 10E
Front Sea Lead	Inner Measured Mile Beacon	27 15 82S 153 14 50E
Koopa Channel Red	Port Lateral Beacon Fl R2.5s	27 19 75S 153 10 27E
Mark "X"	Laid Yellow Inflatable Buoy – located approx. 1.9NM NE of Fisheries Beacon	27 17 99S 153 08 01E

NB: These details are to assist with identification of marks only and must not be used for navigation purposes and any errors or omissions contained in the descriptions and positions given are not grounds for redress.



TROPHIES & TROPHY PRESENTATIONS

Trophies for individual races, series and season results will be awarded at the sole discretion of the race committee depending on entrant numbers.

Trophies will be presented at a location and time to be decided.

RESPONSIBILITY

All those taking part in this race do so at their own risk and responsibility. QCYC Inc. take no responsibility for the safety of competitors or the seaworthiness of a yacht whose entry is accepted or the sufficiency or adequacy of its equipment. The Race Committee and QCYC Inc. reserve the right under World Sailing Rule 76.1 to refuse any entry.

RESPONSIBILITY OF PERSON IN CHARGE

The safety of a boat and her crew is the sole and inescapable responsibility of the person in charge who shall do their best to ensure that the boat is fully found, thoroughly seaworthy and manned by an experienced crew who have undergone appropriate training and are physically fit to face bad weather. He/she must be satisfied as to the soundness of hull, spars, rigging, sails and all gear. He/she shall ensure that all safety equipment is properly maintained and stowed and that the crew know where it is kept and how it is to be used. He/she shall also nominate a person to take over the responsibilities of the Person in Charge in the event of his/her incapacitation.

Neither the establishment of the AS Special Regulations, their use by race organizers, or the inspection of a boat under these Special Regulations in any way limits or reduces the complete and unlimited responsibility of the person in charge.

The attention of every person is drawn to Special Regulation 1.02 and also to the importance of having suitable and adequate personal insurance. It is the responsibility of owners/ skippers/ charterers to ensure their crew have had this drawn to their attention.

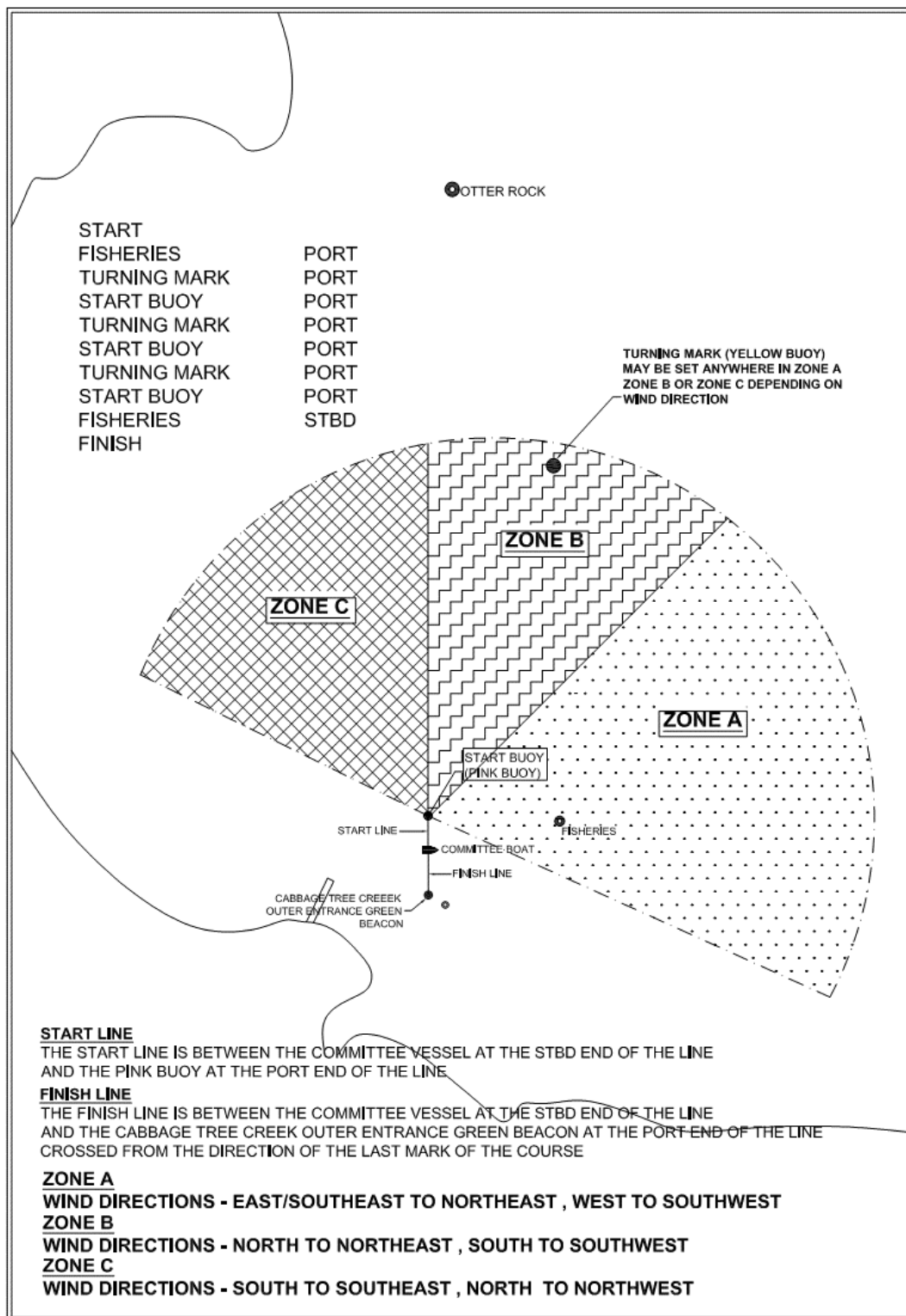
DISCLAIMER

All those taking part in the races do so at their own risk and responsibility. Crew members are deemed to have acknowledged this, and released the Organising Authority, Sponsors and their respective officers, employees, volunteers, and members, from all liability. Specific attention is drawn to RRS Fundamental Rule 3, which states:

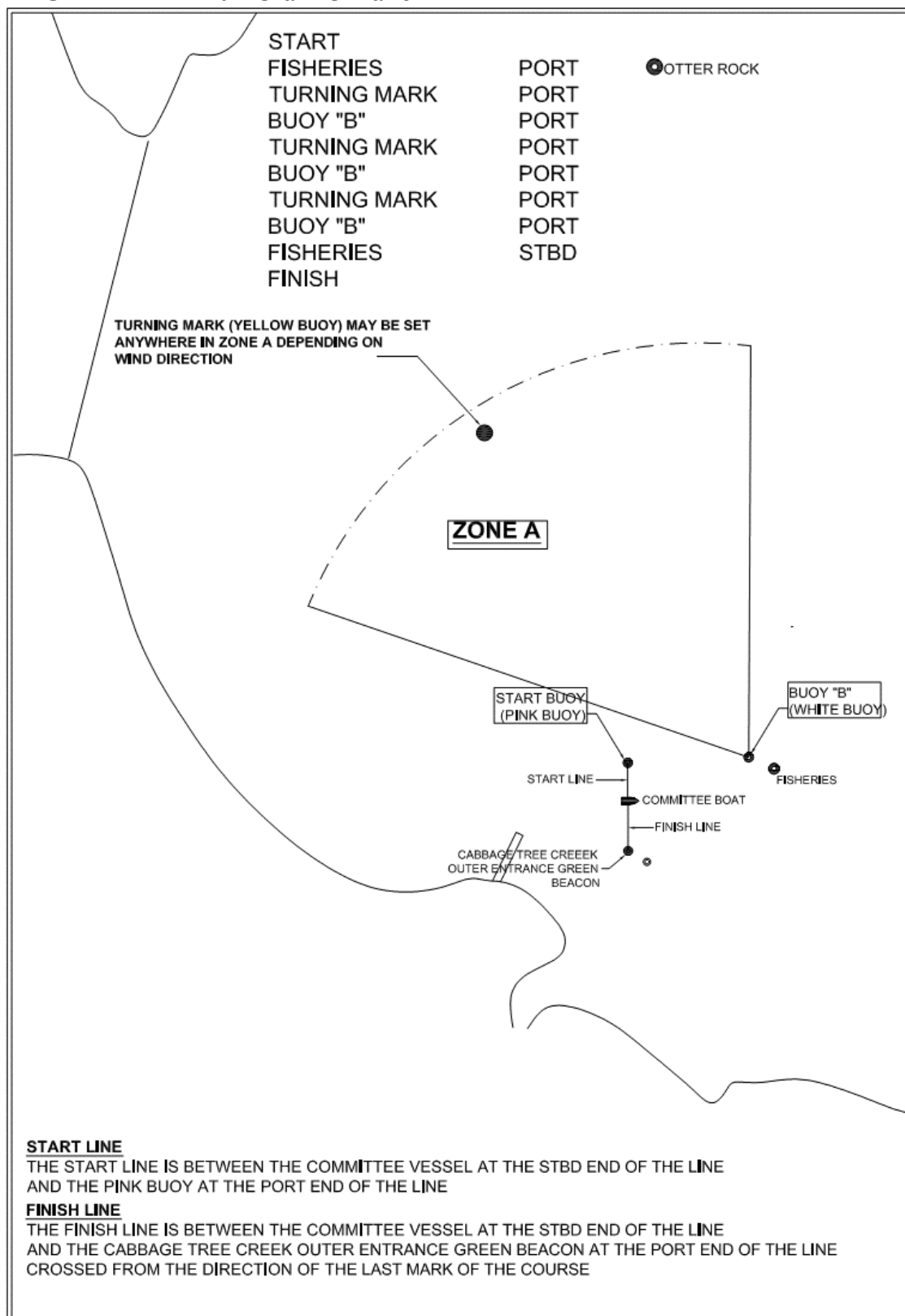
“The responsibility for a boat’s decision to participate in a cruising event or race, or to continue racing is hers alone”

ANNEXURE A – COURSES

COURSE NUMBER I – Numeral Pennant I



COURSE NUMBER 2 – Numeral Pennant 2



COURSE NUMBER 3 – Numeral Pennant 3

From Start	
Fisheries Beacon	Leave to PORT
Woody Point Yellow	Leave to PORT
Start Buoy	Leave to PORT
Woody Point Yellow	Leave to PORT
Start Buoy	Leave to PORT
Fisheries Beacon	Leave to STBD
To the FINISH	

COURSE NUMBER 4 – Numeral Pennant 4

From Start	
Fisheries Beacon	Leave to PORT
Woody Point Yellow	Leave to STBD
Otter Rock Buoy	Leave to PORT
Brisbane Road Buoy	Leave to STBD
Fisheries Beacon	Leave to STBD
To the FINISH	

COURSE NUMBER 5 – Numeral Pennant 5

From Start	
Fisheries Beacon	Leave to PORT
Brisbane Road Buoy	Leave to PORT
Otter Rock Buoy	Leave to STBD
Woody Point Yellow	Leave to PORT
Fisheries Beacon	Leave to STBD
To the FINISH	

COURSE NUMBER 6 – Numeral Pennant 6

From Start	
Fisheries Beacon	Leave to PORT
Brisbane Road Buoy	Leave to STBD
Fisheries Beacon	Leave to STBD
Woody Point Yellow	Leave to STBD
Fisheries Beacon	Leave to STBD
To the FINISH	

COURSE NUMBER 7 – Numeral Pennant 7

From Start	
Fisheries Beacon	Leave to PORT
Woody Point Yellow	Leave to STBD
Fisheries Beacon	Leave to STBD
Woody Point Yellow	Leave to STBD
Fisheries Beacon	Leave to STBD
To the FINISH	

COURSE NUMBER 8 – Numeral Pennant 8

From Start	
Fisheries Beacon	Leave to PORT
Woody Point Yellow	Leave to STBD
Otter Rock Buoy	Leave to PORT
Brisbane Road Buoy	Leave to PORT
North Reef Beacon	Leave to PORT
Garnet Rock Buoy	Leave to STBD
Otter Rock Buoy	Leave to STBD
Fisheries Beacon	Leave to STBD
To the FINISH	

COURSE NUMBER 9 – Numeral Pennant 9

From Start	
Fisheries Beacon	Leave to PORT
Otter Rock Buoy	Leave to PORT
Garnet Rock Buoy	Leave to PORT
North Reef Beacon	Leave to STBD
Brisbane Road Buoy	Leave to STBD
Otter Rock Buoy	Leave to STBD
Woody Point Yellow	Leave to PORT
Fisheries Beacon	Leave to STBD
To the FINISH	

COURSE NUMBER 12 – Numeral Pennant 1 over 2

From Start	
Fisheries Beacon	Leave to PORT
Brisbane Road Buoy	Leave to PORT
Pearl Channel Buoy	Leave to PORT
Fisheries Beacon	Leave to PORT
Brisbane Road Buoy	Leave to STBD
Fisheries Beacon	Leave to STBD
To the FINISH	

COURSE NUMBER 13 – Numeral Pennant 1 over 3

From Start	
Fisheries Beacon	Leave to PORT
Brisbane Road Buoy	Leave to PORT
Otter Rock Buoy	Leave to STBD
Woody Point Yellow	Leave to PORT
Otter Rock Buoy	Leave to PORT
Pearl Channel Buoy	Leave to STBD
Fisheries Beacon	Leave to STBD
To the FINISH	

COURSE NUMBER 14 – Numeral Pennant I over 4

From Start
 Fisheries Beacon Leave to PORT
 Pearl Channel Buoy Leave to PORT
 Fisheries Beacon Leave to PORT
 Brisbane Road Buoy Leave to STBD
 Fisheries Beacon Leave to STBD
 To the FINISH

COURSE NUMBER 15 – Numeral Pennant I over 5

From Start
 Fisheries Beacon Leave to PORT
 Brisbane Road Buoy Leave to STBD
 Fisheries Beacon Leave to STBD
 Brisbane Road Buoy Leave to STBD
 Fisheries Beacon Leave to STBD
 To the FINISH

COURSE NUMBER 16 – Ken O'Brien Memorial Course – Numeral Pennant I over 6

From Start
 Fisheries Beacon Leave to PORT
 Brisbane Road Buoy Leave to PORT
 Front Sea Lead Leave to PORT
 Brisbane Road Buoy Leave to PORT
 Koopa Channel Red Leave to STBD
 Woody Point Yellow Leave to PORT
 Fisheries Beacon Leave to STBD
 To the FINISH

COURSE NUMBER 17 – Life Members Course – Numeral Pennant I over 7

From Start
 Fisheries Beacon Leave to PORT
 Mud Island Round in either direction observing all lateral marks and beacons
 Fisheries Beacon Leave to STBD
 To the FINISH

All yachts with VHF radio are to monitor channel 12 when approaching the Brisbane River – ENTRANCE CHANNEL from both directions and whilst crossing the channel for any shipping movements and for communications with commercial traffic.

NOTE: All yachts must keep clear of commercial vessels when transiting the Brisbane River ENTRANCE CHANNEL at all times. Failure to do so will result in instant disqualification and possible further action from Queensland Transport official channels.

COURSE 18 – Pearl Channel Course – Numeral Pennant I over 8

From Start
 Fisheries Beacon Leave to PORT
 Pearl Channel Buoy (South West Spit) Leave to STBD
 Rear Sea Land (Outer Measured Mile) Leave to STBD
 Fisheries Beacon Leave to STBD
 To the FINISH

COURSE 19 – Numeral Pennant 1 over 9

From Start	
Fisheries Beacon	Leave to PORT
Brisbane Road Buoy	Leave to STBD
Fisheries Beacon	Leave to STBD
Mark "X"	Leave to STBD
Fisheries Beacon	Leave to STBD
Woody Point Yellow	Leave to STBD
Mark X	Leave to STBD
Fisheries Beacon	Leave to STBD
To the FINISH	

COURSE 21 – Numeral Pennant 2 over 1

From Start	
Fisheries Beacon	Leave to PORT
Mark "X"	Leave to PORT
Woody Point Yellow	Leave to STBD
Brisbane Road Buoy	Leave to STBD
Fisheries Beacon	Leave to STBD
Woody Point Yellow	Leave to STBD
Mark X	Leave to STBD
Fisheries Beacon	Leave to STBD
To the FINISH	

COURSE NUMBER 23 – Numeral Pennant 2 over 3

From Start	
Fisheries Beacon	Leave to PORT
Woody Point Yellow	Leave to STBD
Mark "X"	Leave to STBD
Woody Point Yellow	Leave to STBD
Mark "X"	Leave to STBD
Woody Point Yellow	Leave to STBD
Mark X	Leave to STBD
Fisheries Beacon	Leave to STBD
To the FINISH	

COURSE NUMBER 24 – Numeral Pennant 2 over 4

From Start	
Fisheries Beacon	Leave to PORT
Mark "X"	Leave to STBD
Fisheries Beacon	Leave to STBD
Mark "X"	Leave to STBD
Fisheries Beacon	Leave to STBD
Woody Point Yellow	Leave to STBD
Fisheries Beacon	Leave to STBD
To the FINISH	

COURSE NUMBER 25 – Numeral Pennant 2 over 5

From Start	
Fisheries Beacon	Leave to PORT
Mark "X"	Leave to PORT
Brisbane Road Buoy	Leave to PORT
Mark "X"	Leave to STBD
Woody Point Yellow	Leave to PORT
Fisheries Beacon	Leave to STBD
To the FINISH	

COURSE NUMBER 26 – Numeral Pennant 2 over 6

From Start	
Fisheries Beacon	Leave to PORT
Woody Point Yellow	Leave to STBD
Mark "X"	Leave to STBD
Fisheries Beacon	Leave to STBD
Woody Point Yellow	Leave to STBD
Mark X	Leave to STBD
Fisheries Beacon	Leave to STBD
To the FINISH	

COURSE NUMBER 27 – Numeral Pennant 2 over 7

From Start	
Fisheries Beacon	Leave to PORT
Mark "X"	Leave to PORT
Woody Point Yellow	Leave to PORT
Fisheries Beacon	Leave to PORT
Mark "X"	Leave to PORT
Woody Point Yellow	Leave to PORT
Start Buoy	Leave to PORT
Fisheries Beacon	Leave to STBD
To the FINISH	

COURSE NUMBER 28 – Numeral Pennant 2 over 8

From Start	
Fisheries Beacon	Leave to PORT
Woody Point Yellow	Leave to STBD
Otter Rock Buoy	Leave to PORT
Brisbane Road Buoy	Leave to STBD
Fisheries Beacon	Leave to STBD
Woody Point Yellow	Leave to STBD
Fisheries Beacon	Leave to STBD
To the FINISH	

COURSE NUMBER 29 – Numeral Pennant 2 over 9

From Start
 Fisheries Beacon Leave to PORT
 Brisbane Road Buoy Leave to PORT
 Otter Rock Buoy Leave to STBD
 Woody Point Yellow Leave to PORT
 Fisheries Beacon Leave to PORT
 Woody Point Yellow Leave to PORT
 Fisheries Beacon Leave to STBD
 To the FINISH

COURSE NUMBER 31 – Numeral Pennant 3 over 1

From Start
 Fisheries Beacon Leave to PORT
 Brisbane Road Buoy Leave to STBD
 Fisheries Beacon Leave to STBD
 Brisbane Road Buoy Leave to STBD
 Fisheries Beacon Leave to STBD
 To the FINISH

COURSE NUMBER 32 – Numeral Pennant 3 over 2

From Start
 Fisheries Beacon Leave to PORT
 Brisbane Road Buoy Leave to STBD
 Koopa Channel Red Leave to STBD
 Woody Point Yellow Leave to PORT
 Fisheries Beacon Leave to STBD
 To the FINISH

COURSE NUMBER 34 – Numeral Pennant 3 over 4

From Start
 Fisheries Beacon Leave to PORT
 Brisbane Road Buoy Leave to STBD
 Koopa Channel Red Leave to STBD
 Fisheries Beacon Leave to STBD
 To the FINISH

COURSE NUMBER 35 – Numeral Pennant 3 over 5

From Start
 Fisheries Beacon Leave to PORT
 Brisbane Road Buoy Leave to STBD
 Koopa Channel Red Leave to STBD
 Brisbane Road Buoy Leave to STBD
 Fisheries Beacon Leave to STBD
 To the FINISH

COURSE NUMBER 36 – Numeral Pennant 3 over 6

From Start
Fisheries Beacon Leave to PORT
Woody Point Yellow Leave to STBD
Koopas Channel Red Leave to STBD
Fisheries Beacon Leave to STBD
To the FINISH

COURSE NUMBER 37 – Numeral Pennant 3 over 7

From Start
Fisheries Beacon Leave to PORT
Woody Point Yellow Leave to STBD
Koopas Channel Red Leave to STBD
Woody Point Yellow Leave to STBD
Fisheries Beacon Leave to STBD
To the FINISH

COURSE NUMBER 38 – Numeral Pennant 3 over 8

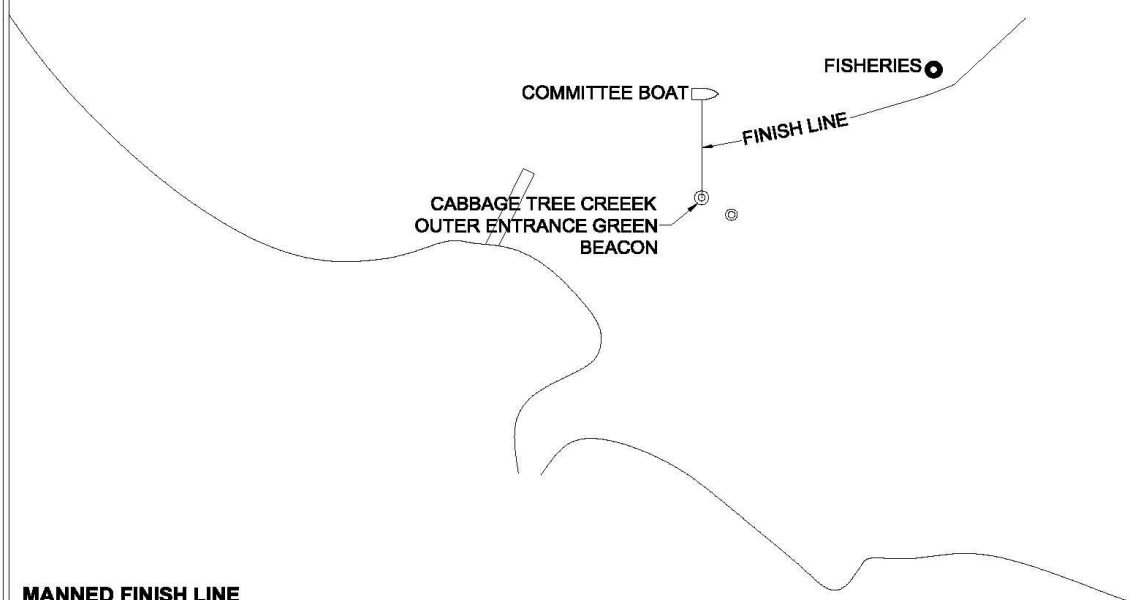
From Start
Fisheries Beacon Leave to PORT
Woody Point Yellow Leave to STBD
Koopas Channel Red Leave to PORT
Brisbane Road Buoy Leave to PORT
Fisheries Beacon Leave to STBD
To the FINISH

COURSE NUMBER 39 – Numeral Pennant 3 over 9

From Start
Fisheries Beacon Leave to PORT
Woody Point Yellow Leave to STBD
Brisbane Road Buoy Leave to STBD
Koopas Channel Red Leave to STBD
Fisheries Beacon Leave to STBD
To the FINISH

ANNEXURE B – FINISH LINE

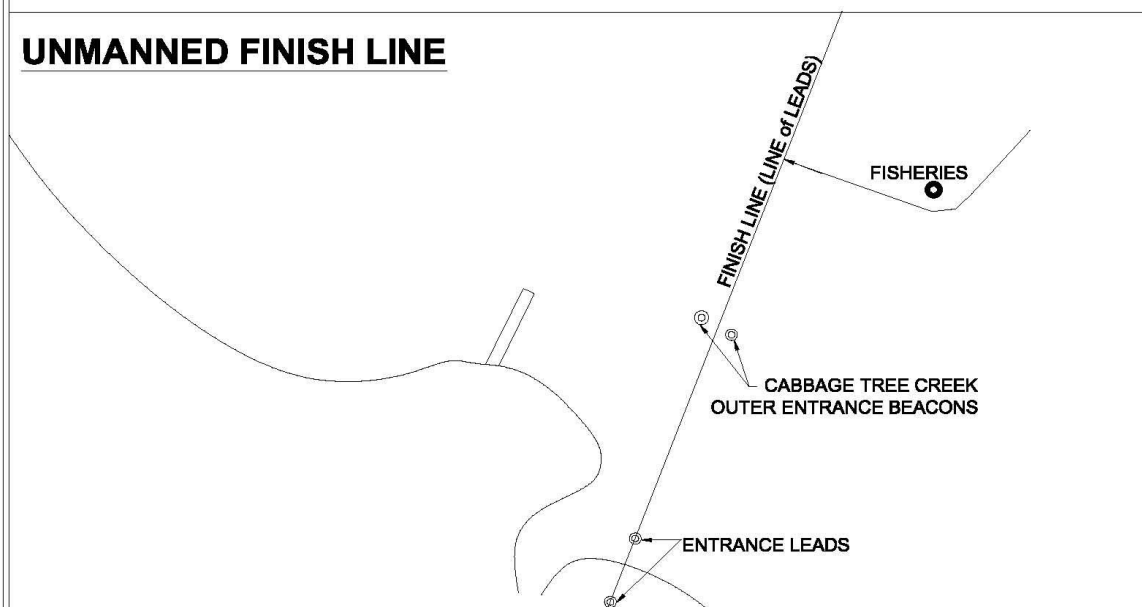
MANNED FINISH LINE



MANNED FINISH LINE

THE FINISH LINE IS BETWEEN THE COMMITTEE VESSEL AT THE STBD END OF THE LINE AND THE CABBAGE TREE CREEK OUTER ENTRANCE GREEN BEACON AT THE PORT END OF THE LINE
CROSSED FROM THE DIRECTION OF THE LAST MARK OF THE COURSE

UNMANNED FINISH LINE



UNMANNED FINISH LINE

THE ALTERNATIVE FINISH LINE IS THE EXTENSION OF THE LINE OF THE CABBAGE TREE CREEK ENTRANCE LEADS (LINE 232.3DEG TRUE).
IF THE COMMITTEE VESSEL IS NOT ON STATION AT THE FINISH THEN YACHTS SHALL, AFTER ROUNDING THE FISHERIES BEACON LEAVING IT TO STBD, SAIL TO THE LINE AND TAKE THEIR FINISH TIME WHEN THE CABBAGE TREE CREEK CHANNEL ENTRANCE LEADS ARE IN LINE.
THE COURSE HEADING FOR THE SHORTEST DISTANCE TO THE LINE OF THE LEADS IS APPROX 323DEG TRUE

ANNEXURE C – PROTEST FORM

Received by race office: Date and timeSignatureNumber
Protest Time Limit

PROTEST FORM – also for requests for redress and reopening

Fill in and tick as appropriate

1. EVENT Organizing authority Date Race no.

2. TYPE OF HEARING

- | | | | |
|---|--------------------------|---|--------------------------|
| Protest by boat against boat | <input type="checkbox"/> | Request for redress by boat or race committee | <input type="checkbox"/> |
| Protest by race committee against boat | <input type="checkbox"/> | Consideration of redress by protest committee | <input type="checkbox"/> |
| Protest by protest committee against boat | <input type="checkbox"/> | Request by boat or race committee to reopen hearing | <input type="checkbox"/> |
| | | Consideration of reopening by protest committee | <input type="checkbox"/> |

3. BOAT PROTESTING, OR REQUESTING REDRESS OR REOPENING

Class Fleet Sail no. Boat's name

Represented by Tel., e-mail

4. BOAT(S) PROTESTED OR BEING CONSIDERED FOR REDRESS

Class **Fleet** **Sail no.** **Boat's name**

5. INCIDENT

Time and place of incident

Rules alleged to have been broken Witnesses

6. INFORMING PROTESTEE How did you inform the protestee of your intention to protest?

- By hailing ☐ When? Word(s) used
- By displaying a red flag ☐ When?
- By informing her in some other way ☐ Give details

7. DESCRIPTION OF INCIDENT (use another sheet if necessary)

Diagram: one square = hull length; show positions of boats, wind and current directions, marks.

This image shows a full page of a document template. It consists of a series of evenly spaced, horizontal blue lines running across the width of the page. The lines are thin and consistent in color and thickness throughout. There are no margins, text, or other markings present on the page.