

QCYC SUMMER SERIES 2023-2024

**INCORPORATING THE GOLD CUP AND CLUB CHAMPIONSHIP
SERIES**



**COMBINED NOTICE OF RACE AND SAILING
INSTRUCTIONS**

Combined NOTICE OF RACE and SAILING INSTRUCTIONS for the QCYC 2023-2024 Summer Series, incorporating the Gold Cup and Club Championship Competitions

INTRODUCTION

Queensland Cruising Yacht Club’s summer racing calendar begins in September with the Bribie Cup Yacht Race. Three races spread over September and October make up the Flag Officers Series. The second series of the calendar, the Bramble Bay series starts with two races in November, one in December and one in February. The Heritage Series commences in February with the Ken O’Brien Memorial Race, followed by the Pearl Channel Race in March and the Life Members Race in April. These eleven races combined make up the Club Championship competition for both monohulls and multihulls. Monohulls may also compete for the Gold Cup, which includes all the above races, plus the Night Series and Brisbane to Gladstone Yacht Race.

The Surf to City Yacht Race is hosted by the Club in January and is part of the Ocean Points Score competition, along with the Fairway Challenge (a MBBC event) and the Brisbane to Gladstone Yacht Race. These events are covered by separate Notices of Race and Sailing Instructions, as is the Bribie Cup Yacht Race.

All races are open to non QCYC members however, only QCYC members are eligible for Championship or Gold Cup points. All races covered by this document start at 1100hrs in the vicinity of the mouth of Cabbage Tree Creek, except the Life Members Race which will start at 1000hrs.

SCHEDULE OF RACES

Q.C.Y.C. 2023/2024 SUMMER SERIES SAILING CALENDAR		AS SAFETY CATEGORY	Flag Officers' Series	HERITAGE SERIES	BRAMBLE BAY SERIES	NIGHT SERIES	MONOHULL CLUB CHAMPIONSHIP / MULTIHULL POINTSCORE	OCEAN POINTS	GOLD CUP
Date	EVENT DESCRIPTION								
Saturday 2nd September 2023 TBC	QCYC Summer Series 23/24 Season Opener Launch								
Saturday 9th September 2023	Bribie Cup Yacht Race Weekend - QCYC (Inter Club Race Event)	5					1		1
Saturday 16th September 2023	QCYC Inter Club Challenge Race (in association with MBBC)	5							
Saturday 23rd September 2023	Rear Commodores Race	5	1				2		2
Saturday 30th September to 2nd October	Bartercard Sail Paradise (SYC SSSA Event Southport)								
Saturday/Sunday 7th/8th October 2023	St Helena Cup - (WMSC SSSA Race Event)	5							
Saturday 14th October 2023	Vice Commodores Race	5	2				3		3
Saturday 21st October 2023	Commodores Race	5	3				4		4
Saturday 28th October 2023	Kingfisher Bay Resort Night Race 1 (QCYC)	5N			1				5
Friday 10th November 2023 *QCYC Starts	SEQ Ocean Racing Qualifier - (SYC Sydney to Hobart Qualifier)	3 Upgraded							
Sunday 12th November 2023	Bramble Bay 1	5		1			5		6
Saturday 18th November 2023	Bramble Bay 2	5		2			6		7
Saturday 18th to 19th November 2023	Ted Elkes Regatta (SYC SSSA Event Southport)								
Saturday 25th November 2023	Kingfisher Bay Resort Night Series Race 2 (MBTBC)	5N			2				8
Saturday 2nd December 2023	Bramble Bay 3	5		3			7		9
Saturday 9th December 2023	Bramble Bay 4	5		4			8		10
Sunday 10th December 2023	QCYC Christmas Party								
Saturday 13th January 2024	Julian Rocks Race B2G 2023 Qualifier (SYC SSSA Event Southport)	3 Upgraded							
Saturday 20th/Sunday 21st January 2024	Tangalooma Plate Race/BBQ/Presentations on the beach								
Friday 26th January 2024	Surf to City Yacht Race Briefing (Venue: Southport Yacht Club)								
Saturday 27th January 2024	Surf to City Yacht Race B2G 2023 Qualifier (QCYC SSSA Event Southport)	4 Upgraded/5N						1	
Sunday 28th January 2024	Surf to City Yacht Race Presentations/Lunch (Venue: QCYC)								
Saturday 10th February 2024	Ken O'Brien Memorial (QCYC Heritage Series Race 1)	5		1			9		11
Saturday 17th February 2024	Pearl Channel Race (QCYC Heritage Series Race 2)	5		2			10		12
Saturday 24th February 2024	Kingfisher Bay Resort Night Race 3 (WMSC)	5N			3				13
Saturday 10th March 2024	Fairway Challenge - (MBBC Ocean Race Event)	4 Upgraded						2	
Saturday 16th March 2024	Kingfisher Bay Resort Night Race 4 (MBBC)	5N				4			14
Friday 22nd March 2024	Kingfisher Bay Resort Night Race PRESENTATIONS (MBBC)								
Saturday 23rd March 2024	Life Members Race (QCYC Heritage Series Race 3)	5		3			11		15
Friday 29th March 2024	Brisbane to Gladstone (QCYC Ocean Race Event)	3 Upgraded						3	16



Should a race be required to be postponed for any reason the race may be re-scheduled to the next available date as specified by and at the sole discretion of the race committee.

RULES

This series will be governed by the:

1. Current Racing Rules of Sailing (“RRS”) of World Sailing; 2021-2024 Version will apply to all individual races and series.
2. Notice of Race (NoR);
3. Sailing Instructions (SI);
4. Between sunset and sunrise, when a yacht cannot determine with certainty what tack the other yacht is on, she shall keep clear of that yacht.
5. Competitors are reminded that part of the definition of “room” includes taking into account the existing conditions (including visibility).
6. Whilst a yacht is operating under its engine the International Regulations for Prevention of Collision at Sea will replace the RRS.

The Organising Authority (QCYC Inc.) reserves the right to amend this document.

SAFETY CATEGORY

The Safety Category for races covered by this document are as indicated in the Summer Series Calendar, The safety category is as per the Australian Sailing Special Regulations Part 1 effective 1 July 2021.

*As per AS Special Regulation Rule 2.02.1, QCYC will require ALL boats to have a current Safety Audit for the applicable safety category to be eligible for entry. Safety audits must be signed off by an authorised Safety Auditor – self auditing is not permitted.

ADVERTISING

Advertising on a yacht shall comply with World Sailing Regulation 20 – Advertising Code

Yachts may be required to display bow decals and/or backstay flags supplied by the Organising Authority for the period of each race in the series.

ELIGIBILITY

To be eligible for acceptance each yacht shall:

1. Have fully completed the online entry form and paid the entry fee.
2. Supply an Australian Sailing Special Regulations Equipment Audit Form proving compliance with the safety requirements listed above.
3. Provide evidence of current Third Party and Public Liability insurance cover of not less than \$10million.

The Organising Authority reserves the right to refuse any entry.

ENTRIES

Entries for series and individual races are to be submitted online via the QCYC website and accompanied by the appropriate documents at least 24 hours prior to the warning signal of a race.

All crew must comply with RRS 21-24, Rule 46, i.e., be members of a club affiliated to Australian Sailing and have an Australian Sailing Number. Crew members who do not hold an Australian Sailing Number may apply for a Temporary Sail Pass. Please note, Temporary Sail Passes are limited to three per person, after which time QCYC Crew Membership must be applied for. Any fees paid for temporary passes will be deducted from membership application fees. Queries regarding membership should be directed to the QCYC office.

ENTRY FEES

ENTRY FEES	
Flag Officers or Heritage Series, 3 races	\$30
Bramble Bay Series, 4 races	\$40
Night Race Series	\$40
Individual race (excluding Bribie Cup, Surf to City or Brisbane to Gladstone)	\$15
Club Championship, 10 races (Does not includes entry fees for Bribie Cup Race)	\$100
Gold Cup - as per Club Championship plus Night Race Series. (Does not include entry fees for Bribie Cup or Brisbane to Gladstone Race) 14 races	\$140
Bribie Cup	\$40
QCYC Inter Club Challenge Race	\$30

OVERALL DIVISIONS

The following divisions may be used:

- Monohull PHRF
- Multihull PHRF

SCORING SYSTEM

The scoring system will follow the Low Point System.

Competitors that are QCYC members are awarded Club Championship, Pointscore and Gold Cup points for all eligible races.

Yachts not eligible for the Brisbane to Gladstone Race (B2G) will receive average points calculated for all races up to the B2G race. Yachts that enter and compete in the Brisbane to Gladstone Race will receive half points for the B2G.

DISCARDS	
Flag Officers & Heritage Series	0
Bramble Bay Series, Night Race Series	1
Club Championship / Multihull Pointscore	3
Gold Cup	4

NOTICES TO COMPETITORS & CHANGES TO THIS DOCUMENT

Notices to Competitors will be posted on the Summer Racing section of the QCYC website and emailed to all registered competitors.

NIGHT RACE SERIES

The QCYC Night Race Series is run concurrently with the Kingfisher Night Race Series.

The sailing instructions for the Kingfisher Night Series apply for these four races.

The Kingfisher Night Series sailing instructions are available as a separate document.

Entry for the Kingfisher Night Series is an independent arrangement and details are available elsewhere.

QCYC boats that do not enter the Kingfisher Night Series but enter QCYC Gold Cup or QCYC Night Series will follow the Sailing Instructions published for the Kingfisher Night Series as above.

DIVISION START TIMES

- The warning signal for all monohulls will be not before 1055hrs for all races (except the Life Members Race and the Night Race Series races).
- The warning signal for all monohulls in the Life Members Race will be not before 0955hrs.
- The warning signal for all multihulls will be five minutes after the monohull start signal.
- Races will be started in accordance with Rule 26

SIGNALS MADE ASHORE

Signals made ashore will be displayed on the flagstaff at the QCYC Clubhouse.

ORAL INSTRUCTIONS

Oral Instructions will be signified by displaying Code Flag L on the committee vessel.

Any oral instructions will be made over VHF Radio on the Race Channel. Entrants unable to receive the transmission shall come within hail and receive instructions.

RACE CHANNEL

The VHF race channel for all races is Ch77. Competitors are required to maintain a listening watch at all times during all races on this channel.

COURSES

Courses are described in Annexure A of this document.

The Committee vessel will display numeral pennants to correspond with the course number to be sailed, not later than the warning signal for the first start.

Courses 16, 17 and 18 have been designated for particular races within the Heritage Series. This does not exclude these courses being used for other races of the series. It also does not exclude the use of other courses for Heritage Series races if weather conditions on the day are not suitable or appropriate in the interests of safety and fair competition.

SHORTENED COURSES

RRS Rule 32 is amended to read as follows:

Courses 1 and 3

- The course may be shortened at the completion of any lap at the rounding of the start buoy on any given lap of the course.
- This will be signified by the committee vessel lowering code flag “S” as each yacht crosses the line between the committee vessel and the course mark.

All other courses may be shortened as follows:

- The race committee may alter or shorten the course at any time and for any reason during the race.
- The course may be altered or shortened at any mark of the course.
- In the event of a shortened course yachts are to take their own finish time when abeam of and within 100m of the designated mark that is the new finish mark.
- The mark is to be left on the side as designated in the initial course description.
- A shortened or altered course will be announced by VHF Radio call to all competitors
- Failure of a competitor to acknowledge or receive the notice of course alteration or shortening will not be grounds for redress.

CREW REGISTERS

Crew Registers must be submitted prior to the start of races. Crew Register Forms are available to download on the race website.

LOGGING ON

Competitors must log on with the Start Boat 15 minutes prior to the start of the first race of each race day.

START LINE

The start line for all courses is an imaginary line between the start buoy (pink buoy) at the port end of the line and the committee vessel at the starboard end of the line

The committee vessel may attempt to notify premature starters on the Race Channel approximately 1 minute after the start signal. Failure of the committee vessel to contact premature starters or failure of premature starters receiving this communication will not be grounds for redress.

FINISH LINE

The Finish Line will be as outlined in Annexure B. Competitors will be notified before the start whether a finish boat will be on station or not.

DECLARATIONS

Declarations are to be made immediately after finishing a race via SMS message to 0412 471 794. The following details are to be provided:

“Yacht Name” , “Finish Time” , “Yacht Behind was _____” , “Yacht in front was _____” . “Any applicable notes”

Ensure your finish time is accurate and corrected to Eastern Standard Time.

As soon as practicable after finishing, the details above should also be emailed to raceentries@gcyc.com.au

TIME LIMIT

The time limit for all courses is official sunset as given by timeanddate.com for the day of the applicable race.

PROTEST

Protests must be properly made in accordance with the RRS.

Immediately after finishing a boat is required to contact the Race Officer and inform them of its intention to protest or request for redress.

Protest forms are available on the QCYC website <https://www.gcyc.com.au/club-sailing-racing/summer-series-gold-cup-and-club-championship/> Protests and requests for redress or reopening shall be delivered by email to raceentries@gcyc.com.au by midnight the day of the race. Skippers will advise the Race Officer by SMS text message to 0498 256428 that they have lodged a protest or request for redress.

Protests will be conducted as laid down in the RRS. A mediation hearing will be held for all protests that allege an infringement of Part 2 of the Rules. A Mediator will be appointed by the Race Committee. Protests that are the subject of mediation may be withdrawn.

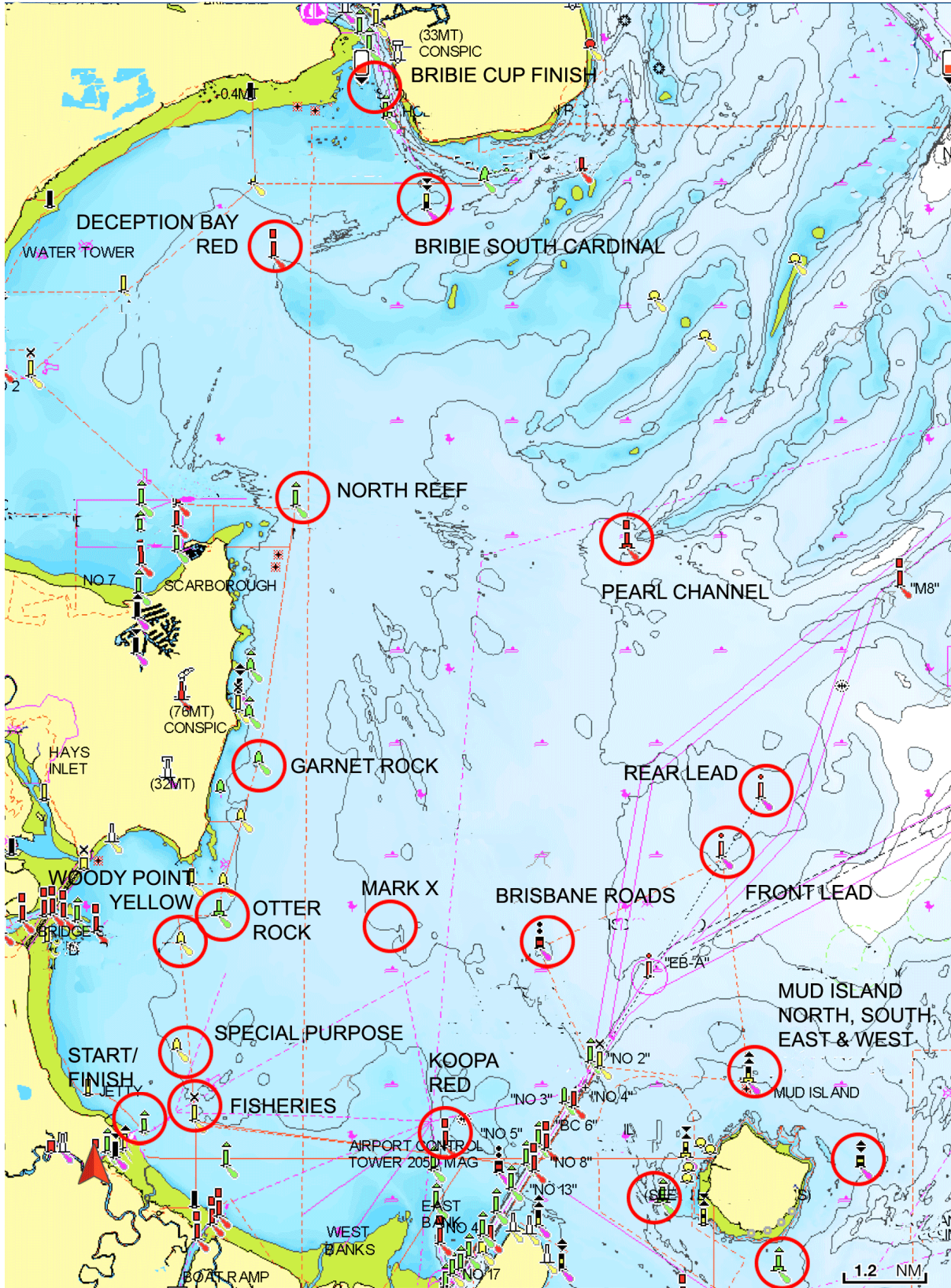
MARINE INCIDENT

Should a major marine incident occur during racing, the owners of the yacht/s involved will need to complete a Marine Incident Report and lodge that to a Shipping Inspector within 48 hours. Further details as well as the form can be found and downloaded for completion from: [Marine incidents \(Maritime Safety Queensland\) \(msq.qld.gov.au\)](http://msq.qld.gov.au)

IDENTIFICATION OF MARKS

Mark	Description	Approx. Position
Fisheries Beacon	Special Yellow Mark Fl Y 3s	27 19 41S 153 06 44E
Pearl Channel Buoy	Port Lateral Buoy F1 R 2.5s	27 11 53S 153 12 99E
North Reef Beacon	Starboard Lateral Tripod Beacon F1 G 4s	27 11 01S 153 07 99E
Otter Rock Buoy	Starboard Lateral Buoy Fl G 2.5s	27 16 58S 153 06 77E
Woody Point Yellow	Yellow Buoy (Fl Y3s) SW of Otter Rock Beacon	27 16 97S 153 06 22E
Brisbane Roads Buoy	Isolated Danger Mark Fl(2) 6s	27 17 08S 153 11 71E
Garnet Rock Buoy	Starboard Lateral Buoy Fl G 6s	27 14 51S 153 07 39E
Deception Bay Red	Port Lateral Buoy Fl R3s	27 07 60S 153 07 65E
Bribie South Cardinal	South Cardinal Beacon Q6 LFl15s	27 06 95S 152 09 98E
Rear Sea Lead	Outer Measured Mile Beacon	27 14 97S 153 15 10E
Front Sea Lead	Inner Measured Mile Beacon	27 15 82S 153 14 50E
Koopa Channel Red	Port Lateral Beacon Fl R2.5s	27 19 75S 153 10 27E
Mark "X"	Laid Yellow Inflatable Buoy – located approx. 1.9NM NE of Fisheries Beacon	27 17 99S 153 08 01E

NB: These details are to assist with identification of marks only and must not be used for navigation purposes. Any errors or omissions contained in the descriptions and positions given are not grounds for redress.



TROPHIES & TROPHY PRESENTATIONS

Trophies and prizes for individual races, series and season results will be awarded at the sole discretion of the race committee depending on entrant numbers.

Trophies and prizes will be presented at a location and time to be decided.

RESPONSIBILITY

All those taking part in this race do so at their own risk and responsibility. QCYC Inc. take no responsibility for the safety of competitors or the seaworthiness of a yacht whose entry is accepted or the sufficiency or adequacy of its equipment. The Race Committee and QCYC Inc. reserve the right under World Sailing Rule 76.1 to refuse any entry.

RESPONSIBILITY OF PERSON IN CHARGE

The safety of a boat and her crew is the sole and inescapable responsibility of the person in charge who shall do their best to ensure that the boat is fully found, thoroughly seaworthy and manned by an experienced crew who have undergone appropriate training and are physically fit to face bad weather. He/she must be satisfied as to the soundness of hull, spars, rigging, sails, and all gear. He/she shall ensure that all safety equipment is properly maintained and stowed and that the crew know where it is kept and how it is to be used. He/she shall also nominate a person to take over the responsibilities of the Person in Charge in the event of his/her incapacitation.

Neither the establishment of the AS Special Regulations, their use by race organizers, or the inspection of a boat under these Special Regulations in any way limits or reduces the complete and unlimited responsibility of the person in charge.

The attention of every person is drawn to Special Regulation 1.02 and also to the importance of having suitable and adequate personal insurance. It is the responsibility of owners/ skippers/ charterers to ensure their crew have had this drawn to their attention.

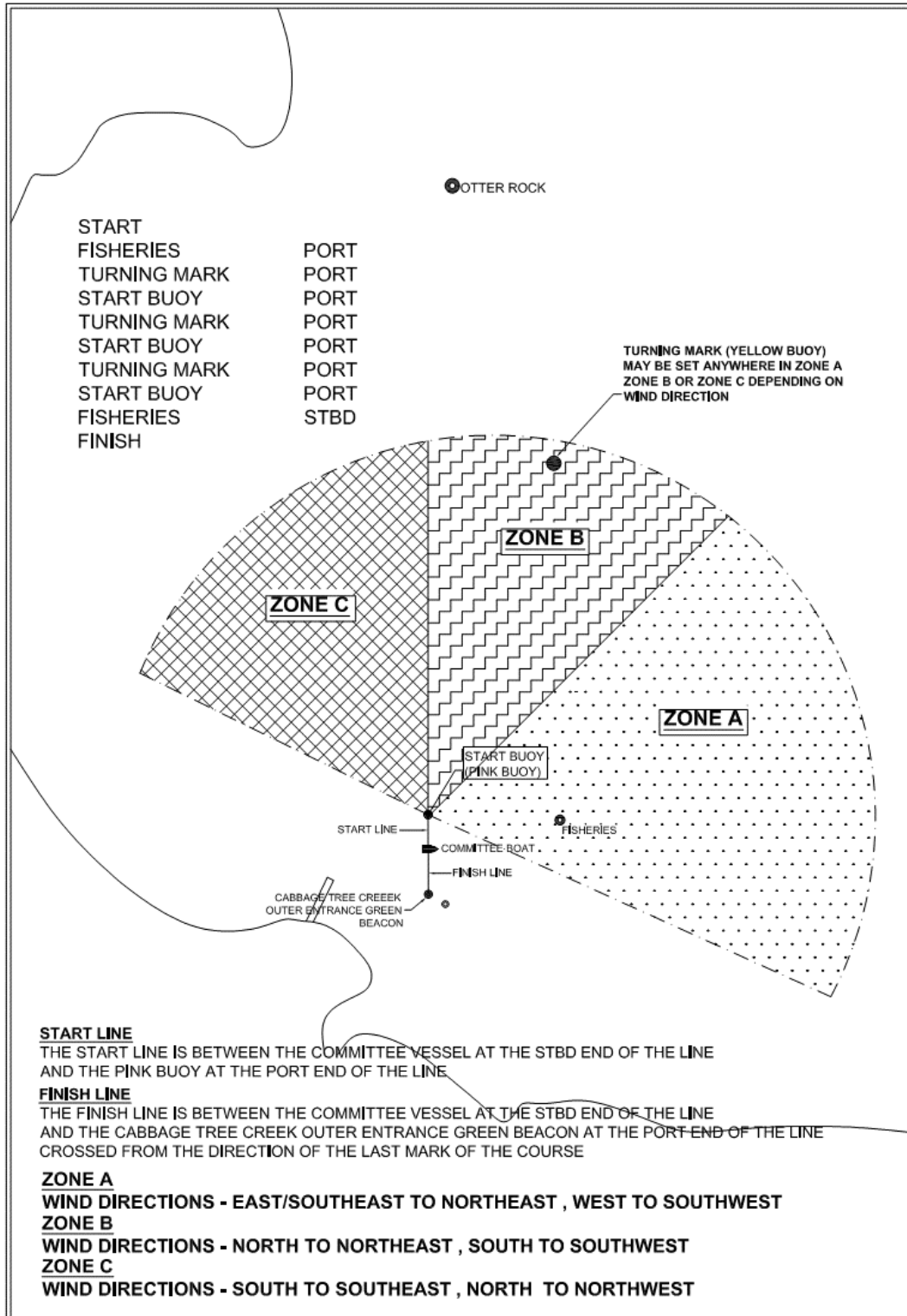
DISCLAIMER

All those taking part in the races do so at their own risk and responsibility. Crew members are deemed to have acknowledged this, and released the Organising Authority, Sponsors and their respective officers, employees, volunteers, and members, from all liability. Specific attention is drawn to RRS Fundamental Rule 3, which states:

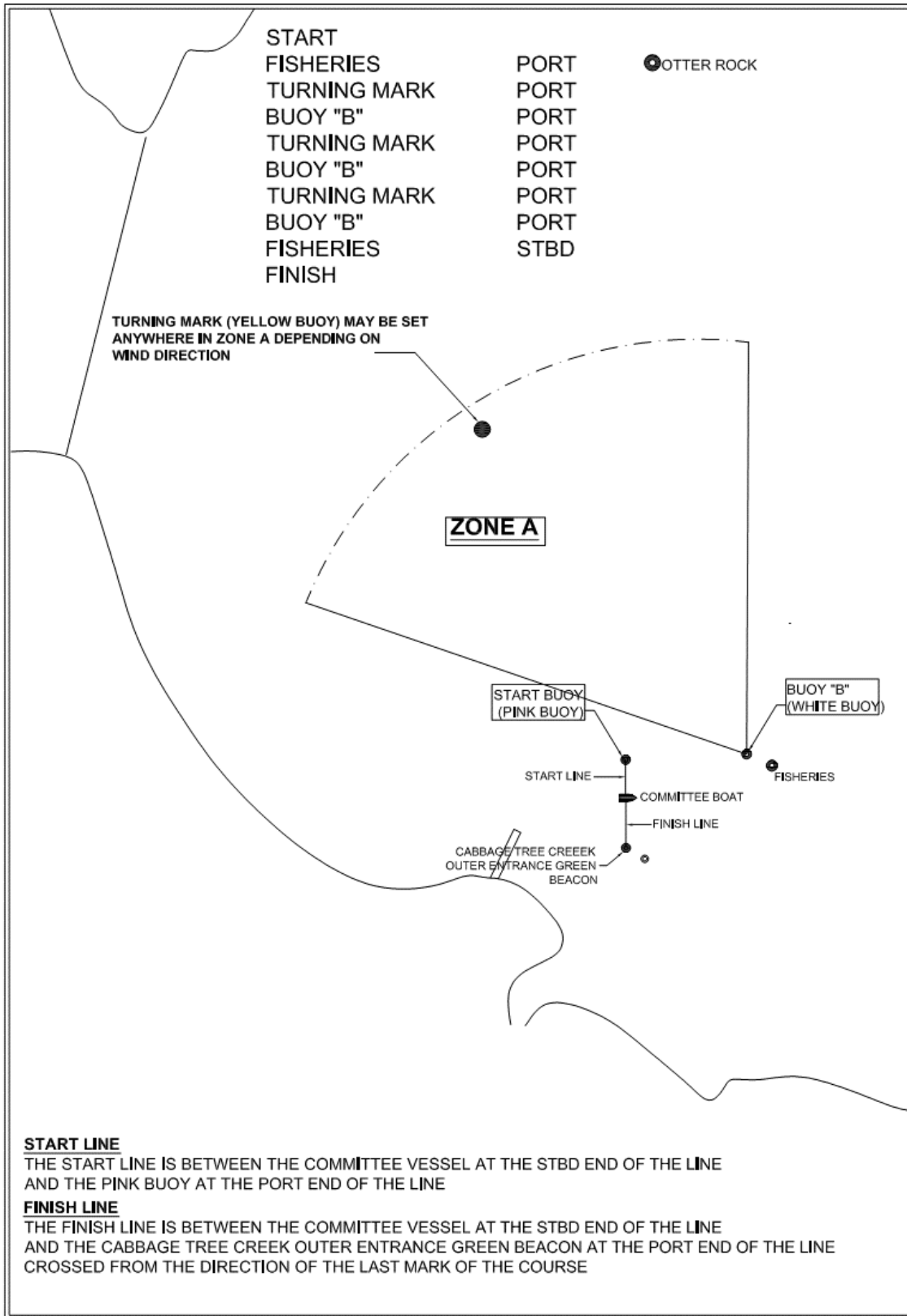
“The responsibility for a boat’s decision to participate in a cruising event or race, or to continue racing is hers alone”.

ANNEXURE A – COURSES

COURSE NUMBER 1 – Numeral Pennant 1



COURSE NUMBER 2 – Numeral Pennant 2



COURSE NUMBER 3 – Numeral Pennant 3

From Start

Fisheries Beacon Leave to PORT

Woody Point Yellow Leave to PORT

Start Buoy Leave to PORT

Woody Point Yellow Leave to PORT

Start Buoy Leave to PORT

Fisheries Beacon Leave to STBD

To the FINISH

COURSE NUMBER 4 – Numeral Pennant 4

From Start

Fisheries Beacon Leave to PORT

Woody Point Yellow Leave to STBD

Otter Rock Buoy Leave to PORT

Brisbane Road Buoy Leave to STBD

Fisheries Beacon Leave to STBD

To the FINISH

COURSE NUMBER 5 – Numeral Pennant 5

From Start

Fisheries Beacon Leave to PORT

Brisbane Road Buoy Leave to PORT

Otter Rock Buoy Leave to STBD

Woody Point Yellow Leave to PORT

Fisheries Beacon Leave to STBD

To the FINISH

COURSE NUMBER 6 – Numeral Pennant 6

From Start

Fisheries Beacon Leave to PORT

Brisbane Road Buoy Leave to STBD

Fisheries Beacon Leave to STBD

Woody Point Yellow Leave to STBD

Fisheries Beacon Leave to STBD

To the FINISH

COURSE NUMBER 7 – Numeral Pennant 7

From Start

Fisheries Beacon Leave to PORT

Woody Point Yellow Leave to STBD

Fisheries Beacon Leave to STBD

Woody Point Yellow Leave to STBD

Fisheries Beacon Leave to STBD

To the FINISH

COURSE NUMBER 8 – Numeral Pennant 8

From Start

Fisheries Beacon	Leave to PORT
Woody Point Yellow	Leave to STBD
Otter Rock Buoy	Leave to PORT
Brisbane Road Buoy	Leave to PORT
North Reef Beacon	Leave to PORT
Garnet Rock Buoy	Leave to STBD
Otter Rock Buoy	Leave to STBD
Fisheries Beacon	Leave to STBD

To the FINISH

COURSE NUMBER 9 – Numeral Pennant 9

From Start

Fisheries Beacon	Leave to PORT
Otter Rock Buoy	Leave to PORT
Garnet Rock Buoy	Leave to PORT
North Reef Beacon	Leave to STBD
Brisbane Road Buoy	Leave to STBD
Otter Rock Buoy	Leave to STBD
Woody Point Yellow	Leave to PORT
Fisheries Beacon	Leave to STBD

To the FINISH

COURSE NUMBER 12 – Numeral Pennant 1 over 2

From Start

Fisheries Beacon	Leave to PORT
Brisbane Road Buoy	Leave to PORT
Pearl Channel Buoy	Leave to PORT
Fisheries Beacon	Leave to PORT
Brisbane Road Buoy	Leave to STBD
Fisheries Beacon	Leave to STBD

To the FINISH

COURSE NUMBER 13 – Numeral Pennant 1 over 3

From Start

Fisheries Beacon	Leave to PORT
Brisbane Road Buoy	Leave to PORT
Otter Rock Buoy	Leave to STBD
Woody Point Yellow	Leave to PORT
Otter Rock Buoy	Leave to PORT
Pearl Channel Buoy	Leave to STBD
Fisheries Beacon	Leave to STBD

To the FINISH

COURSE NUMBER 14 – Numeral Pennant 1 over 4

From Start

Fisheries Beacon Leave to PORT

Pearl Channel Buoy Leave to PORT

Fisheries Beacon Leave to PORT

Brisbane Road Buoy Leave to STBD

Fisheries Beacon Leave to STBD

To the FINISH

COURSE NUMBER 15 – Numeral Pennant 1 over 5

From Start

Fisheries Beacon Leave to PORT

Brisbane Road Buoy Leave to STBD

Fisheries Beacon Leave to STBD

Brisbane Road Buoy Leave to STBD

Fisheries Beacon Leave to STBD

To the FINISH

COURSE NUMBER 16 – Ken O'Brien Memorial Course – Numeral Pennant 1 over 6

From Start

Fisheries Beacon Leave to PORT

Brisbane Road Buoy Leave to PORT

Front Sea Lead Leave to PORT

Brisbane Road Buoy Leave to PORT

Koopa Channel Red Leave to STBD

Woody Point Yellow Leave to PORT

Fisheries Beacon Leave to STBD

To the FINISH

COURSE NUMBER 17 – Life Members Course – Numeral Pennant 1 over 7

From Start

Fisheries Beacon Leave to PORT

Mud Island Round in either direction observing all lateral marks and beacons

Fisheries Beacon Leave to STBD

To the FINISH

All yachts with VHF radio are to monitor channel 12 when approaching the Brisbane River – ENTRANCE CHANNEL from both directions and whilst crossing the channel for any shipping movements and for communications with commercial traffic.

NOTE: All yachts must keep clear of commercial vessels when transiting the Brisbane River ENTRANCE CHANNEL at all times. Failure to do so will result in instant disqualification and possible further action from Queensland Transport official channels.

COURSE 18 – Pearl Channel Course – Numeral Pennant 1 over 8

From Start
 Fisheries Beacon Leave to PORT
 Pearl Channel Buoy (South West Spit) Leave to STBD
 Rear Sea Land (Outer Measured Mile) Leave to STBD
 Fisheries Beacon Leave to STBD
 To the FINISH

COURSE 19 – Numeral Pennant 1 over 9

From Start
 Fisheries Beacon Leave to PORT
 Brisbane Road Buoy Leave to STBD
 Fisheries Beacon Leave to STBD
 Mark "X" Leave to STBD
 Fisheries Beacon Leave to STBD
 Woody Point Yellow Leave to STBD
 Mark X Leave to STBD
 Fisheries Beacon Leave to STBD
 To the FINISH

COURSE 21 – Numeral Pennant 2 over 1

From Start
 Fisheries Beacon Leave to PORT
 Mark "X" Leave to PORT
 Woody Point Yellow Leave to STBD
 Brisbane Road Buoy Leave to STBD
 Fisheries Beacon Leave to STBD
 Woody Point Yellow Leave to STBD
 Mark X Leave to STBD
 Fisheries Beacon Leave to STBD
 To the FINISH

COURSE NUMBER 23 – Numeral Pennant 2 over 3

From Start
 Fisheries Beacon Leave to PORT
 Woody Point Yellow Leave to STBD
 Mark "X" Leave to STBD
 Woody Point Yellow Leave to STBD
 Mark "X" Leave to STBD
 Woody Point Yellow Leave to STBD
 Mark X Leave to STBD
 Fisheries Beacon Leave to STBD
 To the FINISH

COURSE NUMBER 24 – Numeral Pennant 2 over 4

From Start
 Fisheries Beacon Leave to PORT
 Mark "X" Leave to STBD
 Fisheries Beacon Leave to STBD
 Mark "X" Leave to STBD
 Fisheries Beacon Leave to STBD
 Woody Point Yellow Leave to STBD
 Fisheries Beacon Leave to STBD
 To the FINISH

COURSE NUMBER 25 – Numeral Pennant 2 over 5

From Start
 Fisheries Beacon Leave to PORT
 Mark "X" Leave to PORT
 Brisbane Road Buoy Leave to PORT
 Mark "X" Leave to STBD
 Woody Point Yellow Leave to PORT
 Fisheries Beacon Leave to STBD
 To the FINISH

COURSE NUMBER 26 – Numeral Pennant 2 over 6

From Start
 Fisheries Beacon Leave to PORT
 Woody Point Yellow Leave to STBD
 Mark "X" Leave to STBD
 Fisheries Beacon Leave to STBD
 Woody Point Yellow Leave to STBD
 Mark X Leave to STBD
 Fisheries Beacon Leave to STBD
 To the FINISH

COURSE NUMBER 27 – Numeral Pennant 2 over 7

From Start
 Fisheries Beacon Leave to PORT
 Mark "X" Leave to PORT
 Woody Point Yellow Leave to PORT
 Fisheries Beacon Leave to PORT
 Mark "X" Leave to PORT
 Woody Point Yellow Leave to PORT
 Start Buoy Leave to PORT
 Fisheries Beacon Leave to STBD
 To the FINISH

COURSE NUMBER 28 – Numeral Pennant 2 over 8

From Start

Fisheries Beacon	Leave to PORT
Woody Point Yellow	Leave to STBD
Otter Rock Buoy	Leave to PORT
Brisbane Road Buoy	Leave to STBD
Fisheries Beacon	Leave to STBD
Woody Point Yellow	Leave to STBD
Fisheries Beacon	Leave to STBD

To the FINISH

COURSE NUMBER 29 – Numeral Pennant 2 over 9

From Start

Fisheries Beacon	Leave to PORT
Brisbane Road Buoy	Leave to PORT
Otter Rock Buoy	Leave to STBD
Woody Point Yellow	Leave to PORT
Fisheries Beacon	Leave to PORT
Woody Point Yellow	Leave to PORT
Fisheries Beacon	Leave to STBD

To the FINISH

COURSE NUMBER 31 – Numeral Pennant 3 over 1

From Start

Fisheries Beacon	Leave to PORT
Brisbane Road Buoy	Leave to STBD
Fisheries Beacon	Leave to STBD
Brisbane Road Buoy	Leave to STBD
Fisheries Beacon	Leave to STBD

To the FINISH

COURSE NUMBER 32 – Numeral Pennant 3 over 2

From Start

Fisheries Beacon	Leave to PORT
Brisbane Road Buoy	Leave to STBD
Koopa Channel Red	Leave to STBD
Woody Point Yellow	Leave to PORT
Fisheries Beacon	Leave to STBD

To the FINISH

COURSE NUMBER 34 – Numeral Pennant 3 over 4

From Start

Fisheries Beacon	Leave to PORT
Brisbane Road Buoy	Leave to STBD
Koopa Channel Red	Leave to STBD
Fisheries Beacon	Leave to STBD

To the FINISH

COURSE NUMBER 35 – Numeral Pennant 3 over 5

From Start

Fisheries Beacon	Leave to PORT
Brisbane Road Buoy	Leave to STBD
Koopa Channel Red	Leave to STBD
Brisbane Road Buoy	Leave to STBD
Fisheries Beacon	Leave to STBD

To the FINISH

COURSE NUMBER 36 – Numeral Pennant 3 over 6

From Start

Fisheries Beacon	Leave to PORT
Woody Point Yellow	Leave to STBD
Koopa Channel Red	Leave to STBD
Fisheries Beacon	Leave to STBD

To the FINISH

COURSE NUMBER 37 – Numeral Pennant 3 over 7

From Start

Fisheries Beacon	Leave to PORT
Woody Point Yellow	Leave to STBD
Koopa Channel Red	Leave to STBD
Woody Point Yellow	Leave to STBD
Fisheries Beacon	Leave to STBD

To the FINISH

COURSE NUMBER 38 – Numeral Pennant 3 over 8

From Start

Fisheries Beacon	Leave to PORT
Woody Point Yellow	Leave to STBD
Koopa Channel Red	Leave to PORT
Brisbane Road Buoy	Leave to PORT
Fisheries Beacon	Leave to STBD

To the FINISH

COURSE NUMBER 39 – Numeral Pennant 3 over 9

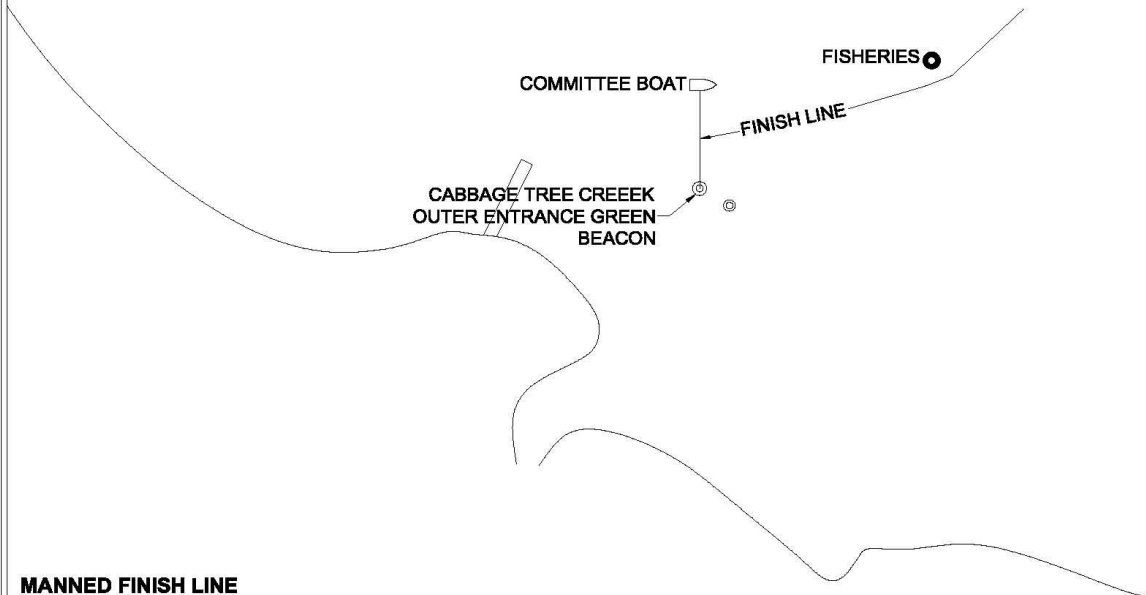
From Start

Fisheries Beacon	Leave to PORT
Woody Point Yellow	Leave to STBD
Brisbane Road Buoy	Leave to STBD
Koopa Channel Red	Leave to STBD
Fisheries Beacon	Leave to STBD

To the FINISH

ANNEXURE B – FINISH LINE

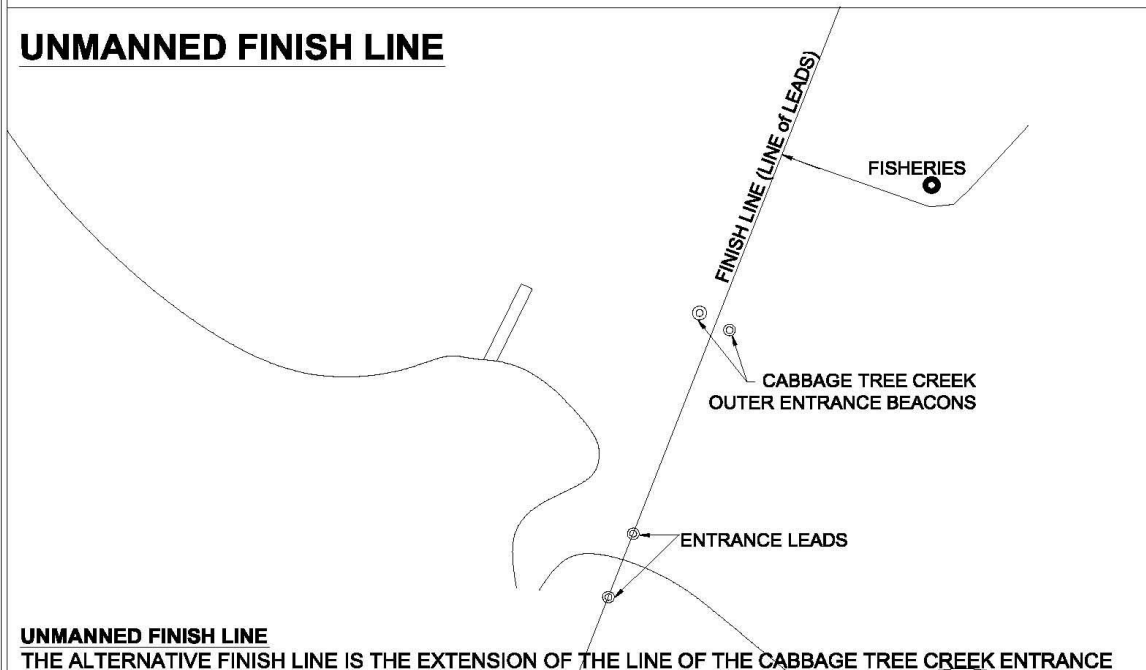
MANNED FINISH LINE



MANNED FINISH LINE

THE FINISH LINE IS BETWEEN THE COMMITTEE VESSEL AT THE STBD END OF THE LINE AND THE CABBAGE TREE CREEK OUTER ENTRANCE GREEN BEACON AT THE PORT END OF THE LINE
CROSSED FROM THE DIRECTION OF THE LAST MARK OF THE COURSE

UNMANNED FINISH LINE



UNMANNED FINISH LINE

THE ALTERNATIVE FINISH LINE IS THE EXTENSION OF THE LINE OF THE CABBAGE TREE CREEK ENTRANCE LEADS (LINE 232.3DEG TRUE).
IF THE COMMITTEE VESSEL IS NOT ON STATION AT THE FINISH THEN YACHTS SHALL, AFTER ROUNDING THE FISHERIES BEACON LEAVING IT TO STBD, SAIL TO THE LINE AND TAKE THEIR FINISH TIME WHEN THE CABBAGE TREE CREEK CHANNEL ENTRANCE LEADS ARE IN LINE.
THE COURSE HEADING FOR THE SHORTEST DISTANCE TO THE LINE OF THE LEADS IS APPROX 323DEG TRUE

ANNEXURE C – PROTEST FORM

Received by race office: Date and timeSignatureNumber
 Protest Time Limit

PROTEST FORM – also for requests for redress and reopening

Fill in and tick as appropriate

1. EVENT Organizing authority Date Race no.

2. TYPE OF HEARING

- | | | | |
|---|--------------------------|---|--------------------------|
| Protest by boat against boat | <input type="checkbox"/> | Request for redress by boat or race committee | <input type="checkbox"/> |
| Protest by race committee against boat | <input type="checkbox"/> | Consideration of redress by protest committee | <input type="checkbox"/> |
| Protest by protest committee against boat | <input type="checkbox"/> | Request by boat or race committee to reopen hearing | <input type="checkbox"/> |
| | | Consideration of reopening by protest committee | <input type="checkbox"/> |

3. BOAT PROTESTING, OR REQUESTING REDRESS OR REOPENING

Class Fleet Sail no. Boat's name
 Represented by Tel., e-mail

4. BOAT(S) PROTESTED OR BEING CONSIDERED FOR REDRESS

Class Fleet Sail no. Boat's name

5. INCIDENT

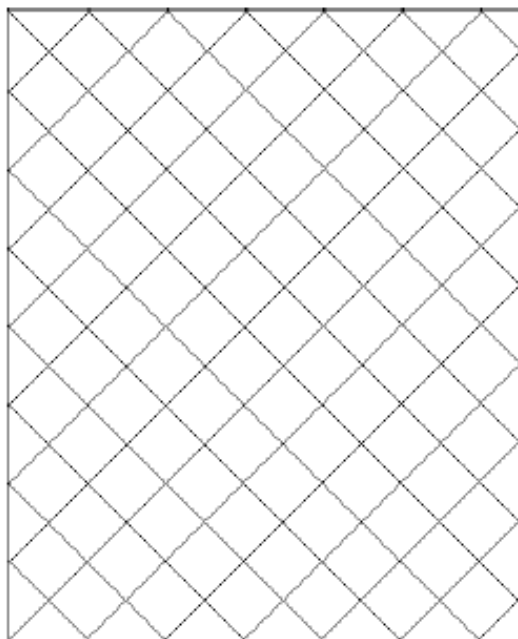
Time and place of incident
 Rules alleged to have been broken Witnesses

6. INFORMING PROTESTEE How did you inform the protestee of your intention to protest?

- | | | |
|------------------------------------|--------------------------|--------------------------------|
| By hailing | <input type="checkbox"/> | When? Word(s) used |
| By displaying a red flag | <input type="checkbox"/> | When? |
| By informing her in some other way | <input type="checkbox"/> | Give details |

7. DESCRIPTION OF INCIDENT (use another sheet if necessary)

Diagram: one square = hull length; show positions of boats, wind and current directions, marks.



.....

.....

.....

.....

.....

.....

.....

.....

.....

.....

.....

.....

.....

.....

.....

.....

.....

.....

.....

.....

