



2023

BRIBIE CUP YACHT RACE

A weekend of fun

Race: 9th SEPTEMBER 2023



SAILING INSTRUCTIONS

2023 Bribie Cup Yacht Race

Sailing Instructions

RULES

This race will be governed by the:

1. Current Racing Rules of Sailing (“RRS”) of the International Sailing Federation (ISAF);
2. Current Australian Sailing Prescriptions and Special Regulations Part 1, Category 5;
3. Notice of Race (NoR);
4. Sailing Instructions (SI);
5. Whilst a yacht is operating under its engine the International Regulations for Prevention of Collision at Sea will replace the RRS, Part 2.

The Organising Authority (QCYC Inc.) reserves the right to amend this Notice of Race up until the start of the race.

SAFETY

The Safety Category is Cat 5 of the Australian Sailing Special Regulations Part 1 effective 1 July 2021.

QCYC reserves the right to conduct random safety checks on any yacht entered prior to, or upon, completion of the race.

CREW LISTS

Crew Lists must be submitted prior to the start of this race. Refer to Appendix D and Appendix E.

WEATHER CONSIDERATIONS

The decision to start the race will be based on the forecast and the anticipated conditions in the finish area. The race may be abandoned or postponed if a gale warning or stronger is current at the proposed start time or, it is considered that the finish area will be unsafe for competitors.

ADVERTISING

Refer NOR

CHANGES TO SAILING INSTRUCTIONS

Any changes to Sailing Instructions may be:

1. Prior to 0900h on the day of the Race, posted on the Bribie Cup website bribiecup.qcyc.com.au and sent via email to competitors.

2. Given as oral instructions at the start area prior to the warning signal via VHF 77.

DIVISIONS – BRIBIE CUP

Division allocations will be made by 1200hrs on Friday 8th September 2023 and will be posted on the Bribie Cup website www.bribiecup.qcyc.com.au

SCHEDULE OF EVENTS – BRIBIE CUP

Race Date: Saturday 9th September 2023

Monohull Short Course Division - Warning Signal no before 0955hrs

Monohull Long Course Division - Warning Signal not before 1005hrs

Multihull Division - Warning Signal not before 1115hs

COURSE DESCRIPTIONS – BRIBIE CUP

Monohull - Short Course Division - Course

The start will be as described in these Instructions.

Course as follows:

- From the Start
- Round Fisheries Beacon to Port (Special Yellow Mark FI Y 3s approx. 27 19 41S 153 06 44E)
- Leave Otter Rock Buoy to Port (Starboard Lateral Buoy FI G 2.5s approx. 27 16 58S 153 06 77E)
- Leave Garnet Rock Buoy to Port (Starboard Lateral Buoy FI G 6s (approx. 27 14 51S 153 07 39E)
- Leave North Reef Beacon to Port (Starboard Lateral Tripod Beacon FI G 4s (approx. 27 11 01S 153 07 99E)
- Leave Deception Bay Red Beacon to Starboard (Port Lateral Buoy FI R3s approx. 27 07 59S 153 07 65E)
- Leave Bribie Lighted South Cardinal to Port (South Cardinal Beacon approx. 27 06 95S 152 09 98E)
- To the Finish as described in these Instructions

Monohull - Long Course Division and Multihull Division - Course

The start will be as described in these Instructions.

Course as follows:

- From the Start
- Round Fisheries Beacon to Port (Special Yellow Mark FI Y 3s approx. 27 19 41S 153 06 44E)
- Round Brisbane Road Buoy to Port (Isolated Danger Mark FI(2) 6s (approx. 27 17 08S 153 11 71E)

- Leave North Reef Beacon to Port (Starboard Lateral Tripod Beacon Fl G 4s (approx. 27 11 015 153 07 99E)
- Leave Deception Bay Red Beacon to Starboard (app: 27 ° 07.599'S 153 ° 07.653'E)
- Leave Bribie Lighted South Cardinal Beacon (app: 27 ° 06.9486'S 153 ° 09.9866'E) to Port
- To the Finish as described in these Instructions

Short Course

Should the short course option be selected prior to the race start then ALL divisions will sail the course as described for Monohull Division Short Course above.

Should the short course option be selected then Code Flag S will be displayed by the committee vessel prior to the start of the first division and throughout the sequences for subsequent divisions.

The short course may be announced by the committee vessel on VHF 77 before the commencement of the first scheduled start sequence.

SHORTENED COURSES

RRS Rule 32 is amended to read as follows:

1. The race committee may alter or shorten the course at any time after the start and for any reason during the race.
2. The course may be altered or shortened at any mark of the course.
3. The race committee vessel may be on station at the designated mark that is the new finish mark.
4. If the race committee vessel is not on station at the designated new finish mark, yachts are to take their own finish time when abeam of and within 100m of the designated mark that is the new finish mark.
5. The mark is to be left on the side as designated in the initial course description.
6. A shortened or altered course will be announced by VHF Radio call to all competitors on VHF 77.
7. Failure of a competitor to acknowledge or receive the notice of course alteration or shortening will not be grounds for redress.

THE START – BRIBIE CUP

1. The start will be in accordance with the ISAF Racing Rules of Sailing Part 3, Rule 26, at times listed under Schedule of Events
2. If a division start is delayed or recalled, then all subsequent start times will be delayed by the same amount of time delay.
3. The Warning Signal for each Division will be:
 - a. Monohull Div. One – Numeral Pennant 1
 - b. Monohull Div. Two - Numeral Pennant 2
 - c. Multihull Div. 3 - Numeral Pennant 3
4. Individual recalls will be signalled in accordance with rule 29.2 (Code flag "X" and one sound signal) Yachts may also be recalled by radio from the committee vessel.

START LINE – BRIBIE CUP RACE

1. The Start Line will be an imaginary line between the main mast of the committee Vessel at the starboard end of the start line and a pink buoy at the port end of the line. The start line will be in the vicinity of the outer entrance beacons to Cabbage Tree Creek, Shorncliffe.
2. The start line will be established not less than 20 minutes before the first warning signal.

FINISH LINE – BRIBIE CUP RACE

1. The finish line will be an imaginary line between the Flagpole on the Bongaree Jetty at Bribie Island (the starboard end of the line) and a laid Buoy (the port end of the line). Please refer to Appendix B.
2. Finish times will be recorded but all yachts will take their own finishing times and be able to supply this to the Race Committee if required.

PROTESTS

Protests must be properly made in accordance with the RRS.

1. Immediately after finishing a boat is required to contact the Race Officer and inform them of its intention to protest or request for redress.
2. Protest forms are available on the QCYC website <https://www.qcyc.com.au/club-sailing-racing/summer-series-gold-cup-and-club-championship/> Protests and requests for redress or reopening shall be delivered by email to raceentries@qcyc.com.au by midnight the day of the race. Skippers will advise the Race Officer by SMS text message to 0498 256428

that they have lodged a protest or request for redress.

COMMUNICATIONS

1. All starters must check in with the start vessel "Bribie Cup Control" on VHF 77 on Saturday. Boats who fail to check in may be considered non-starters.
2. All competitors are to monitor VHF 77 and VHF16 immediately following the race start for the duration of the race. This requirement is the responsibility of the owner or skipper to enforce.
3. In the event that the race is cancelled or postponed on the day of the race, the Race Committee may attempt to call all entrants on the mobile number provided on their entry. Notices may also be posted on the QCYC Facebook and Twitter sites.
4. Should the event be cancelled or postponed prior to the day of the race, notices will be posted on the race website, QCYC website and via the email address provided on competitor's entry form.

RETIREMENTS

Yachts retiring from any of the races are required to notify QCYC Race Control via phone or text on **0412 471794**. If using the SMS method, please ensure you include the boat name.

TIME LIMITS

The time limit for the Bribie Cup Race will be 1740Hrs.

INSURANCE

Yachts shall have a current Third Party and Public Liability Insurance Policy of not less than \$10million.

PRIZES - BRIBIE CUP

The Monohull with the highest calculated speed factor across all divisions will be awarded The Bribie Cup

The Multihull with the fastest corrected time will be awarded The Councillors Cup.

Prizes will be awarded to First and Second on corrected time in each Division. Divisions with seven boats or more will also have a Third place prize.

A line honours prize will be awarded for each Division.

A crew member or delegate of the yacht must be present at the presentation to receive any prizes. Prizes not collected during the presentation will not be available for collection at a later date.

Other prizes may be awarded as determined by the Organising Authority.

Prizes will be awarded to First and Second on corrected time in each Division. Divisions with seven boats or more will also have a Third place prize.

TEAMS TROPHY – BRIBIE CUP

The teams trophy will be awarded to the nominated team (two yachts with the lowest aggregate score based on placings in the respective divisions).

FURTHER INFORMATION

Queries regarding entry should be directed to Scott Murphy on 0412471794 or via email to raceentries@qcyc.com.au

Queensland Cruising Yacht Club
Ph: (07) 3269 4588

This event is run with the assistance of Bribie Island Sailing Club.

APPENDIX A - CATERING & BERTHING ARRANGEMENTS

FRIDAY NIGHT AND SATURDAY NIGHT

A welcome and drinks party will be held from 6:00pm on the Friday night.

Dinner reservations for the restaurant are preferred to avoid disappointment.

QCYC marina berthing facilities will be available for competitors from Friday 8th September. Berthing is limited; therefore, competitors should stow extra warps and fenders for the race in case they are required to raft up.

A berthing plan will be provided at the same time as the division allocations are announced. Yachts must not moor in any location other than those allowed for by the berthing plan. You will be advised of your berth via email prior to Friday 8th September.

The Club's restaurant and bar will be open for dinner on Friday and Saturday night. Reservations are **essential** and can be made either via the office by phoning 3269 4588 or online at [Restaurant and Bar - Queensland Cruising Yacht Club \(qcy.com.au\)](http://Restaurant and Bar - Queensland Cruising Yacht Club (qcy.com.au))

SATURDAY and SUNDAY MORNING

Coffee and Breakfast will be available from the Club both days from 0730hrs.

SATURDAY AFTERNOON FOLLOWING THE RACE

After the race, competitors are invited and welcome to "cruise in company" back to QCYC and may choose to stay overnight.

Berth bookings for those returning to QCYC for the Saturday night are essential and required in advance.

Boats must adhere to the QCYC berthing plan.

PRESENTATION OF TROPHIES

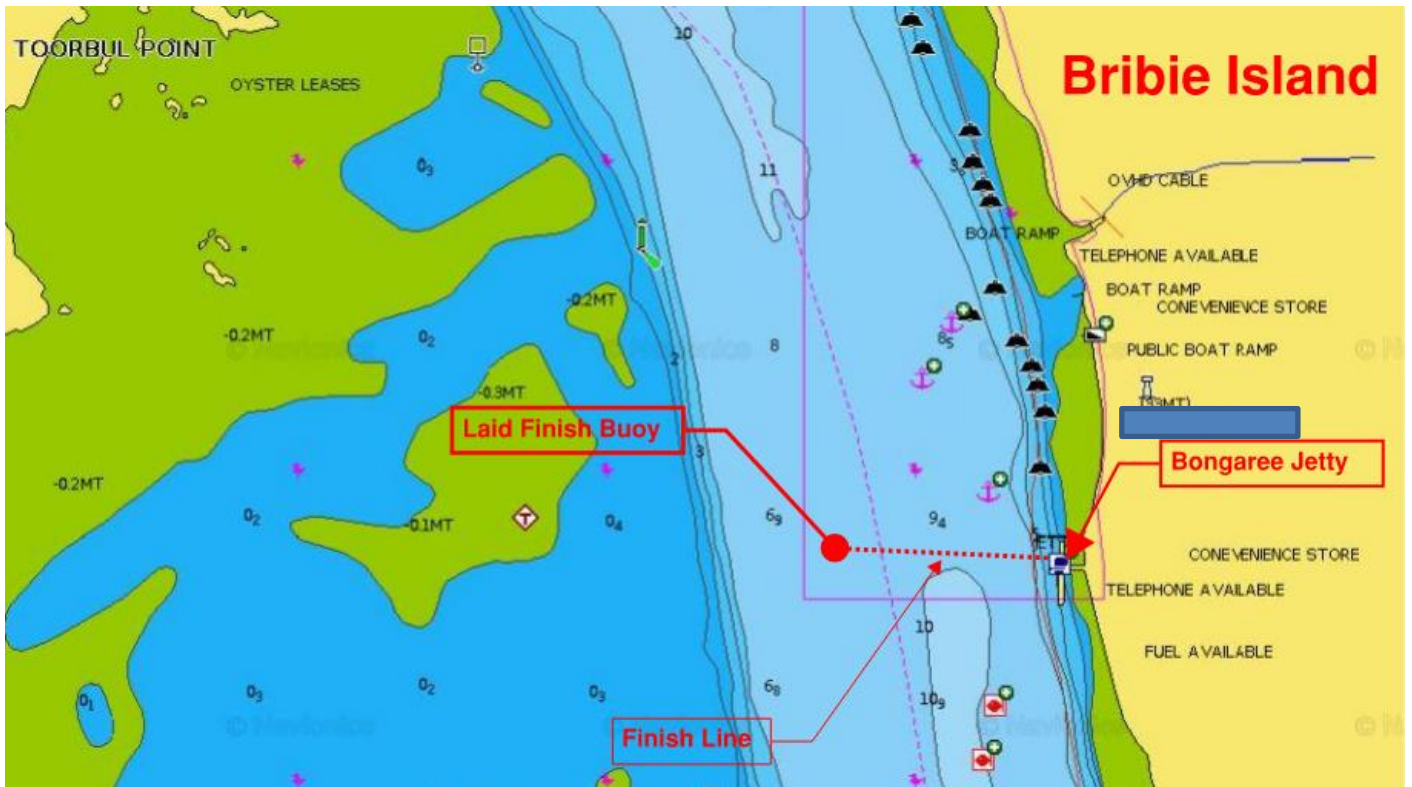
The presentation of trophies and prizes for the Bribie Cup Yacht Race will be held from 9am on Sunday 10th September at QCYC.

All competitors are very welcome to stay on and celebrate with Sunday lunch and live music from midday.

Our "Sunday Sessions" is a very popular and well attended musical event held every Sunday, featuring live music, food, and refreshments of choice.

We look forward to your company!

APPENDIX B – FINISH LINE DIAGRAM



This diagram is not subject to redress

APPENDIX C – DECLARATION FORM

- This form is NOT required for the BRIBIE CUP unless requested by the Race Committee however skippers must ensure that they have the information to enable them to complete it if requested, and (if requested) is to be sent to 0412 471794 as soon as possible after finishing.

I hereby declare that I _____

was on board and in charge of the yacht _____

while sailing in the above race and that the rules as detailed in the Sailing Instructions and applicable to the yacht were observed except as detailed below.

The yacht finished at:

Date _____

Time Hrs _____ Mins _____ Sec _____

If observable, the yacht in front of me

was _____

And the yacht behind me

was _____

SIGNED _____

PRINT NAME _____