



**Gladstone Ports
Corporation**

Growth, prosperity, community.

Gladstone Ports Corporation

WINTER SERIES 2021

SAILING INSTRUCTIONS

SATURDAY 29TH MAY TO SUNDAY 4TH JULY 2021



RULES

This series will be governed by the:

1. Current Racing Rules of Sailing ("RRS") of the International Sailing Federation (ISAF);
2. Current YA Prescriptions and Special Regulations Part 1, Category 5;
3. Notice of Race (NoR);
4. Sailing Instructions (SI);
5. Class Rules as applicable, subject to change by the NoR and SI;
6. Between sunset and sunrise, when a yacht cannot determine with certainty what tack the other yacht is on, she shall keep clear of that yacht.
7. Competitors are reminded that part of the definition of "room" includes taking into account the existing conditions (including visibility).
8. Whilst a yacht is operating under its engine the International Regulations for Prevention of Collision at Sea will replace the RRS, Part 2.

At any time prior to the warning signal for any race, the committee may make alteration to the Sailing Instructions.

CHANGES TO RRS

1. RRS 55.2 Fixed and Retractable Spinnaker Poles will be permitted for the purpose of setting Asymmetrical Spinnakers.
2. RRS 55.3 Bowsprits may be used to secure the tack of a spinnaker

SCHEDULE OF RACES

Saturday 29 th May	Race 1 & 2 – Short Course Races
Saturday 12 th June	Race 3 & 4 – Short Course Races
Sunday 20 th June	Race 5 – Passage Race
Saturday 26 th June	Race 6 – Passage Race
Sunday 27 th June	Race 7 – Passage Race
Saturday 3 rd July	Race 8 & 9 – Short Course Races
Sunday 4 th July	Presentation Brunch

Races 5 to 9 make up the Travellers Series
Race 6 & 7 make up the Otter Rock Plate Team Event

Should any race be required to be postponed for any reason the race may be re-scheduled to the next available date as specified by and at the sole discretion of the race committee.

Winners will be announced and prized awarded at the end of each day's racing at the QCYC clubhouse as soon as practicable excepting for the 3rd July, 2021. Light snacks will be provided compliments of the Gladstone Ports Corporation.

NOTICES TO COMPETITORS

Notices to Competitors will be posted at <https://www.qcyc.com.au/club-sailing-racing/winter-series/> and/or on the QCYC Clubhouse Administration Window notice boards.

CHANGES TO SAILING INSTRUCTIONS

Changes to Sailing Instruction affecting dates or times of races may be emailed to entrants at least one day prior to the altered race and displayed on the series website, <https://www.qcyc.com.au/club-sailing-racing/winter-series/>

SIGNALS MADE ASHORE & ORAL INSTRUCTIONS

Signals made ashore will be displayed on the flagstaff at the QCYC Clubhouse.

Oral Instructions will be signified by displaying Code Flag L on the committee vessel. Any oral instructions will be made over VHF Radio on the race channel defined in the "COMMUNICATIONS" section. Entrants unable to receive the transmission shall come within hail and receive instructions.

DIVISION ALLOCATIONS

1. Where there are two divisions for monohulls and/or multihulls Division One will be for the faster boats sailing longer courses and Division Two will be for slower boats sailing shorter courses.
2. The division allocation list will be displayed on the series website.
3. The number of divisions will be at the discretion of the organising authority and will be decided based on entry numbers.
4. IT IS THE YACHT'S/SKIPPER'S RESPONSIBILITY TO CONFIRM THE DIVISION ALLOCATED AND TO SAIL THE CORRECT COURSE FOR THAT DIVISION.

COMMUNICATIONS

1. All competitors must log on with Race Control at least 15 minutes prior to the first start of the first race of each race day.
2. Competitors not intending to complete the second race of a race day must contact Race Control prior to leaving the race area.
3. The VHF race channel for all races is **Ch77**. Race Control will maintain, and competitors are required to maintain, a listening watch at all times during all races on this channel.

START TIMES

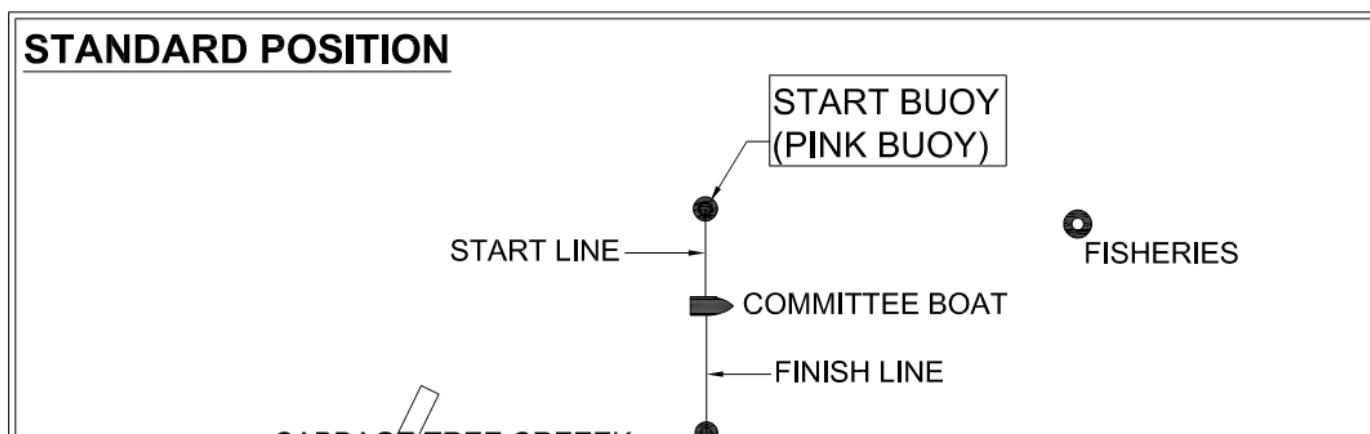
The warning signal for the first race on each day will be not before 1055Hrs unless otherwise notified

COVID 19

Compliance to Government requirements in relation to Covid 19 is mandatory. Please refer to the club website to ensure that you comply.

START LINE

The start line for all courses is an imaginary line between the **start buoy (pink buoy) at the port** end of the line and the committee vessel at the **starboard end** of the line



STARTING PROCEDURE

1. Races will be started in accordance with Rule 26.
2. A Yellow Flag will be the warning signal flag for each division.
3. The committee vessel may attempt to notify premature starters on VHF CH 77 approximately 1 minute after the start signal. Failure of the committee vessel to contact premature starters or failure of premature starters receiving this communication will NOT be grounds for redress.

Starting procedure guide

Monohul	5 minute warning signal will sound for the Monohull Fleet	Yellow Flag UP
	1 minute later the 4 minute signal will sound	Code Flag P UP
	3 minutes later the 1 minute signal will sound	Code Flag P Down
	1 minute later the start signal will sound.	Yellow Flag Down
Multihulls	5 minutes after the Monohulls start signal the 5 minute warning signal will sound	Yellow Flag UP
	1 minute later the 4 minute signal will sound	Code Flag P UP
	3 minutes later the 1 minute signal will sound	Code Flag P Down
	1 minute later the start signal will sound.	Yellow Flag Down

COURSES

1. Courses are described in Annexure A.
2. The Committee vessel will display numeral pennants to correspond with the course number to be sailed.

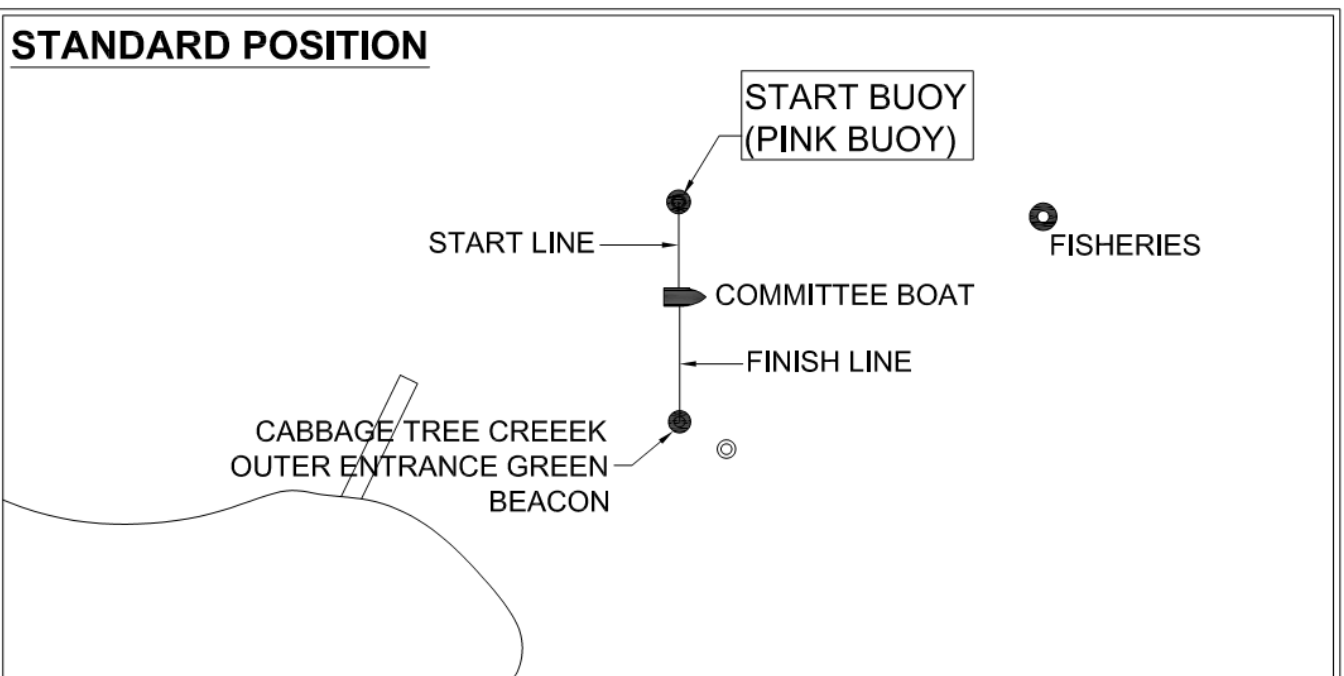
SHORTENED COURSES

RRS Rule 32 is amended to read as follows:

1. Courses 1, 2 and 3
 - i. The course may be shortened at the completion of any lap at the rounding of the start buoy on any given lap of the course.
 - ii. This will be signified by the committee vessel lowering code flag "S" as each yacht crosses the line between the committee vessel and the course mark.
2. Courses 4, 5, 6, 7, 8, 9, 12, 13, 14, 15 and 16:
 - i. The race committee may alter or shorten the course at any time and for any reason during the race.
 - ii. The course may be altered or shortened at any mark of the course.
 - iii. The committee vessel MAY be on station at the new finish mark
 - iv. If the committee vessel is NOT on station at the new finish mark, then all yachts are to take their own finish time when abeam of and within 100m of the designated mark that is the new finish mark.
 - v. The mark is to be left on the side as designated in the initial course description.
 - vi. A shortened or altered course will be announced by VHF Radio call to all competitors on VHF Channel 77.
 - vii. All competitors are to monitor VHF77 for the duration of the race.
 - viii. Failure of a competitor to acknowledge or receive the notice of course alteration or shortening will not be grounds for redress.

FINISH LINE

The finish line for all courses is an imaginary line between the **Cabbage Tree Creek GREEN Outer Entrance Beacon at the PORT** end of the line and the **Committee Boat at the STBD** end of the line crossed from the direction of the last course mark.



UNMANNED FINISH

If the finish boat is not on station, the finish line will be between the Green Outer Entrance Beacon at the port end and the Pink Start Buoy at the starboard end. Yachts shall take their own finish time and submit a declaration as outlined in the 'Declaration' section of these instructions. Last boat to finish will recover the finishing buoys.

Where possible, competitors will be notified of an Unmanned Finish in advance.

TIME LIMIT

The time limit for all races will be 1730Hrs.

DECLARATIONS

Declarations are to be made immediately after finishing a race via SMS message. The following details are to be provided:

"Yacht Name", "Finish Time", "Yacht Behind was _____", "Yacht in front was _____". "Any applicable notes"

Ensure your finish time is accurate and corrected to Eastern Standard Time.

SMS messages are to be sent to 0412 471 794. As soon as practicable after finishing, the details above should also be emailed to raceentries@qcyc.com.au

PROTESTS

(Amends RRS 61, RRS62, RRS T1 and RRS T2).

1. Protests shall be in accordance with RRS 61.
2. Protests or requests for redress arising from the Race shall be delivered to Race Control within one hour of the finishing time of the protesting boat.
3. RRS Appendix T (Arbitration) applies and is extended to also include Rule 28 and Part 4 of the RRS.
4. Post-race penalties given via arbitration may include time penalties.

PRESENTATION OF TROPHIES

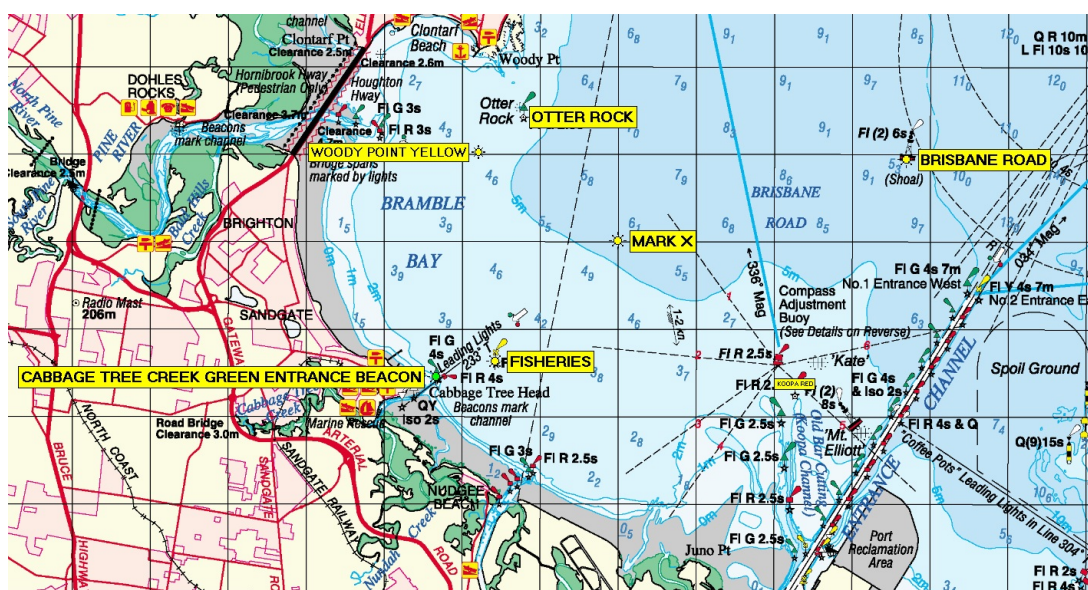
Trophies will be presented at the QCYC Clubhouse at a Presentation Brunch commencing at 1030Hrs on Sunday the 4th July 2021. The following trophies may be awarded at the sole discretion of the race committee as outlined below:

1. First, second and third in each division over the Series.
2. First, second and third for the Travellers Series.
3. The Winter Bell Challenge perpetual trophy
4. The Otter Rock Plate perpetual trophy for Monohulls
5. The Otter Rock Plate perpetual trophy for Multihulls

IDENTIFICATION OF MARKS

Mark	Description	Approx Position
Fisheries Beacon	Special Yellow Mark Fl(4) Y 10s	27 19 41S 153 06 44E
Otter Rock Beacon	Starboard Lateral Beacon Fl G 2.5s	27 16 58S 153 06 77E
Brisbane Road Buoy	Isolated Danger Mark Fl(2) 6s	27 17 08S 153 11 71E
Woody Point Yellow	Yellow Buoy (Fl Y 3s) – located SW of Otter Rock Beacon	27 16 97S 153 06 22E
Koopa Channel Red	Port Lateral Beacon (Fl R2.5s)	27 19 75S 153 10 27E
Mark "X"	Laid Yellow Inflatable Buoy – located approx.. 1.9NM NE of Fisheries Beacon	27 17 99S 153 08 01E

NB: These details are to assist with identification of marks only and must not be used for navigation purposes and any errors or omissions contained in the descriptions and positions given are not grounds for redress.



RESPONSIBILITY

All those taking part in this race do so at their own risk and responsibility. QCYC Inc. take no responsibility for the safety of competitors or the seaworthiness of a yacht whose entry is accepted or the sufficiency or adequacy of its equipment. The Race Committee and QCYC Inc. reserve the right under ISAF Rule 76.1 to refuse any entry.

RESPONSIBILITY OF PERSON IN CHARGE

The safety of a boat and her crew is the sole and inescapable responsibility of the person in charge who shall do their best to ensure that the boat is fully found, thoroughly seaworthy and manned by an experienced crew who have undergone appropriate training and are physically fit to face bad weather. He/she must be satisfied as to the soundness of hull, spars, rigging, sails and all gear. He/she shall ensure that all safety equipment is properly maintained and stowed and that the crew know where it is kept and how it is to be used. He/she shall also nominate a person to take over the responsibilities of the Person in Charge in the event of his/her incapacitation.

Neither the establishment of the AS Special Regulations, their use by race organizers, or the inspection of a boat under these Special Regulations in any way limits or reduces the complete and unlimited responsibility of the person in charge.

The attention of every person is drawn to Special Regulation 1.02 and also to the importance of having suitable and adequate personal insurance. It is the responsibility of owners/ skippers/ charterers to ensure their crew have had this drawn to their attention.

DISCLAIMER

All those taking part in the races do so at their own risk and responsibility. Crew members are deemed to have acknowledged this, and released the Organising Authority, Sponsors and their respective officers, employees, volunteers and members, from all liability. Specific attention is drawn to RRS Fundamental Rule 4, which states:

“The responsibility for a boat’s decision to participate in a cruising event or race, or to continue racing is hers alone”

ANNEXURE A – COURSES

QCYC WINTER SERIES COURSE NUMBER 1 (NUMERAL PENNANT 1)

MONOHULL DIVISION 1

START	
FISHERIES	PORT
TURNING MARK	PORT
START BUOY	PORT
TURNING MARK	PORT
START BUOY	PORT
TURNING MARK	PORT
START BUOY	PORT
FISHERIES	STBD
FINISH	

MULTIHULL DIVISION 1

START	
FISHERIES	PORT
TURNING MARK	PORT
START BUOY	PORT
TURNING MARK	PORT
START BUOY	PORT
TURNING MARK	PORT
START BUOY	PORT
FISHERIES	STBD
FINISH	

MONOHULL DIVISION 2

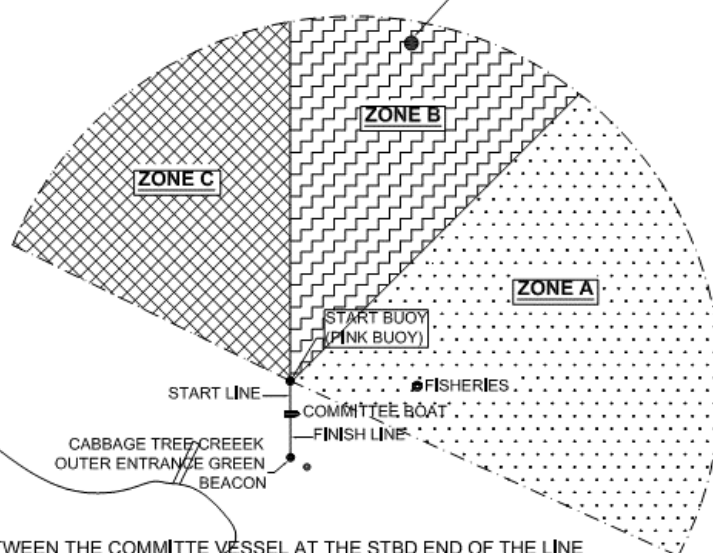
START	
FISHERIES	PORT
TURNING MARK	PORT
START BUOY	PORT
TURNING MARK	PORT
START BUOY	PORT
FISHERIES	STBD
FINISH	

MULTIHULL DIVISION 2

START	
FISHERIES	PORT
TURNING MARK	PORT
START BUOY	PORT
TURNING MARK	PORT
START BUOY	PORT
FISHERIES	STBD
FINISH	

● OTTER ROCK

TURNING MARK (YELLOW BUOY)
MAY BE SET ANYWHERE IN ZONE A
ZONE B OR ZONE C DEPENDING ON
WIND DIRECTION



START LINE

THE START LINE IS BETWEEN THE COMMITTEE VESSEL AT THE STBD END OF THE LINE AND THE PINK BUOY AT THE PORT END OF THE LINE

FINISH LINE

THE FINISH LINE IS BETWEEN THE COMMITTEE VESSEL AT THE STBD END OF THE LINE AND THE CABBAGE TREE CREEK OUTER ENTRANCE GREEN BEACON AT THE PORT END OF THE LINE
CROSSED FROM THE DIRECTION OF THE LAST MARK OF THE COURSE

ZONE A

WIND DIRECTIONS - EAST/SOUTHEAST TO NORTHEAST, WEST TO SOUTHWEST

ZONE B

WIND DIRECTIONS - NORTH TO NORTHEAST, SOUTH TO SOUTHWEST

ZONE C

WIND DIRECTIONS - SOUTH TO SOUTHEAST, NORTH TO NORTHWEST

COURSE NUMBER 2 – NUMERAL PENNANT 2**Monohull Div. 1 and Multihull Div. 1**

From Start
 Fisheries Beacon Leave to PORT
 Woody Point Yellow Leave to PORT
 Start Buoy Leave to PORT
 Woody Point Yellow Leave to PORT
 Start Buoy Leave to PORT
 Fisheries Beacon Leave to STBD
 To the FINISH

Monohull Div. 2 and Multihull Div. 2

From Start
 Fisheries Beacon Leave to PORT
 Woody Point Yellow Leave to PORT
 Start Buoy Leave to PORT
 Fisheries Beacon Leave to STBD
 To the FINISH

COURSE NUMBER 3 – NUMERAL PENNANT 3**Monohull Div. 1 and Multihull Div. 2**

From Start
 Fisheries Beacon Leave to PORT
 Brisbane Road Buoy Leave to PORT
 Otter Rock Beacon Leave to STBD
 Woody Point Yellow Leave to PORT
 Start Buoy Leave to PORT
 Fisheries Beacon Leave to STBD
 To the FINISH

Monohull Div. 2 and Multihull Div. 2

From Start
 Fisheries Beacon Leave to PORT
 Brisbane Road Buoy Leave to PORT
 Start Buoy Leave to PORT
 Fisheries Beacon Leave to STBD
 To the FINISH

COURSE NUMBER 4 – NUMERAL PENNANT 4**Monohull Div. 1 and Multihull Div. 1**

From Start
 Fisheries Beacon Leave to PORT
 Woody Point Yellow Leave to STBD
 Otter Rock Beacon Leave to PORT
 Brisbane Road Buoy Leave to STBD
 Fisheries Beacon Leave to STBD
 To the FINISH

Monohull Div. 2 and Multihull Div. 2

From Start
 Fisheries Beacon Leave to PORT
 Brisbane Road Buoy Leave to STBD
 Fisheries Beacon Leave to STBD
 To the FINISH

COURSE NUMBER 5 – NUMERAL PENNANT 5**Monohull Div. 1 and Multihull Div. 1**

From Start
 Fisheries Beacon Leave to PORT
 Brisbane Road Buoy Leave to STBD
 Fisheries Beacon Leave to STBD
 Start Buoy Leave to STBD
 Woody Point Yellow Leave to STBD
 Fisheries Beacon Leave to STBD
 To the FINISH

Monohull Div. 2 and Multihull Div. 2

From Start
 Fisheries Beacon Leave to PORT
 Brisbane Road Buoy Leave to STBD
 Fisheries Beacon Leave to STBD
 Start Buoy Leave to STBD
 Fisheries Beacon Leave to STBD
 To the FINISH

COURSE 6 – NUMERAL PENNANT 6**Monohull Div. 1 and Multihull Div. 1**

From Start
 Fisheries Beacon Leave to PORT
 Woody point Yellow Leave to STBD
 Fisheries Beacon Leave to STBD
 Woody Point Yellow Leave to STBD
 Fisheries Beacon Leave to STBD

To the FINISH

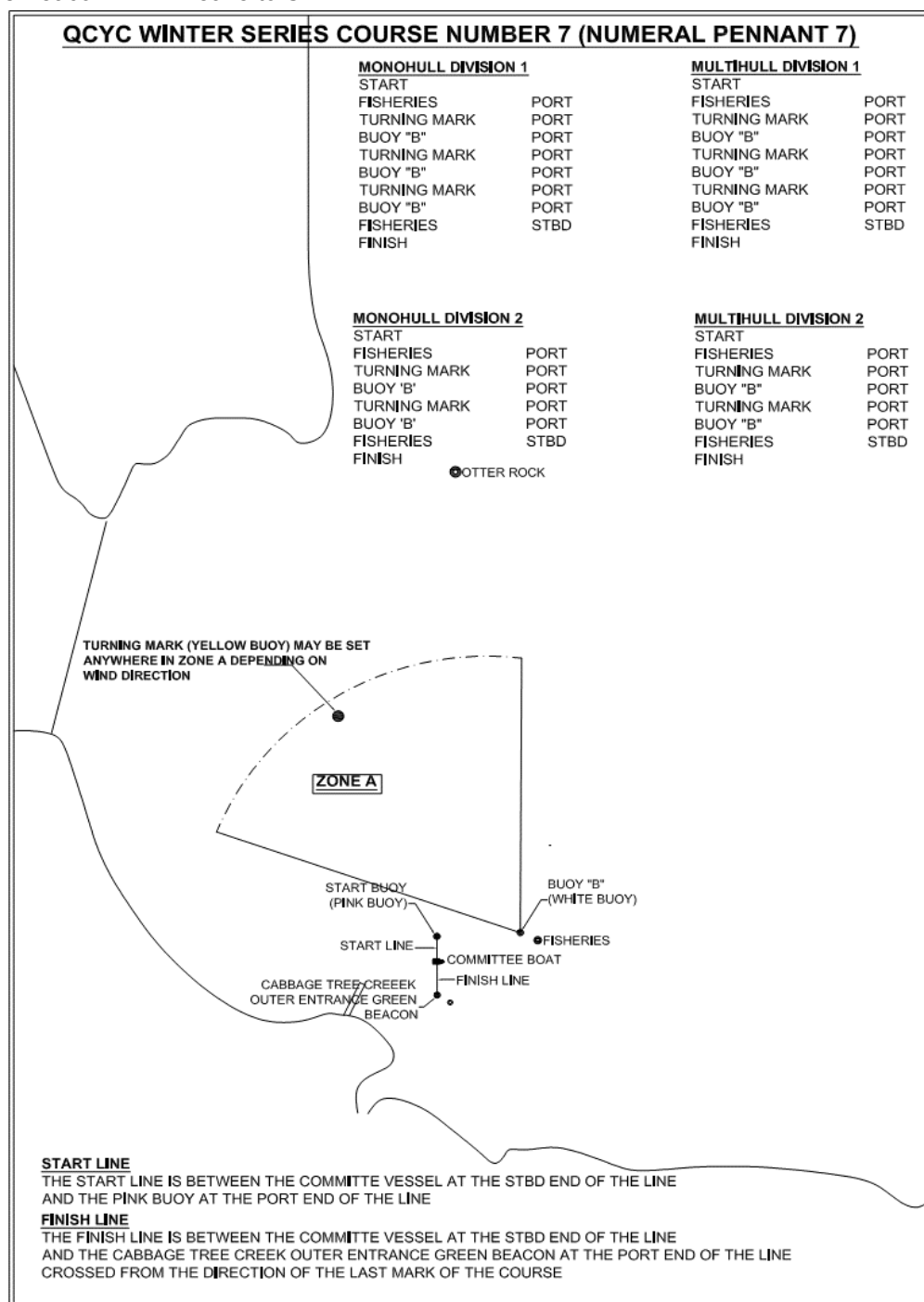
Monohull Div. 2 and Multihull Div. 2

From Start
 Fisheries Beacon Leave to PORT
 Woody Point Yellow Leave to STBD
 Fisheries Beacon Leave to STBD

Start Buoy
Fisheries Beacon

Leave to STBD
Leave to STBD

To the FINISH



COURSE 8 – NUMERAL PENNANT 8

Monohull Div. 1 and Multihull Div. 1

From Start

Fisheries Beacon	Leave to PORT
Brisbane Road Buoy	Leave to STBD
Fisheries Beacon	Leave to STBD
Mark "X"	Leave to STBD
Fisheries Beacon	Leave to STBD

Woody Point Yellow	Leave to STBD
Mark X	Leave to STBD
Fisheries Beacon	Leave to STBD
To the FINISH	

Monohull Div. 2 and Multihull Div. 2

From Start

Fisheries Beacon	Leave to PORT
------------------	---------------

Brisbane Road Buoy	Leave to STBD
Fisheries Beacon	Leave to STBD
Mark "X"	Leave to STBD
Fisheries Beacon	Leave to STBD

To the FINISH

COURSE 9 – NUMERAL PENNANT 9

Monohull Div. 1 and Multihull Div. 1

From Start	
Fisheries Beacon	Leave to PORT
Mark "X"	Leave to PORT
Woody Point Yellow	Leave to STBD
Brisbane Road Buoy	Leave to STBD
Fisheries Beacon	Leave to STBD
Woody Point Yellow	Leave to STBD
Mark X	Leave to STBD
Fisheries Beacon	Leave to STBD
To the FINISH	

Monohull Div. 2 and Multihull Div. 2

From Start	
Fisheries Beacon	Leave to PORT
Mark "X"	Leave to PORT
Woody Point Yellow	Leave to STBD
Brisbane Road Buoy	Leave to STBD
Fisheries Beacon	Leave to STBD
To the FINISH	

COURSE 12 – NUMERAL PENNANTS 1 over 2

Monohull Div. 1 and Multihull Div. 1

From Start	
Fisheries Beacon	Leave to PORT
Woody Point Yellow	Leave to STBD
Mark "X"	Leave to STBD
Woody Point Yellow	Leave to STBD
Mark "X"	Leave to STBD
Woody Point Yellow	Leave to STBD
Mark X	Leave to STBD
Fisheries Beacon	Leave to STBD
To the FINISH	

Monohull Div. 2 and Multihull Div. 2

From Start	
Fisheries Beacon	Leave to PORT
Woody Point Yellow	Leave to STBD
Mark "X"	Leave to STBD
Woody Point Yellow	Leave to STBD
Mark "X"	Leave to STBD
Fisheries Beacon	Leave to STBD
To the FINISH	

COURSE 13 – NUMERAL PENNANTS 1 over 3

Monohull Div. 1 and Multihull Div. 1

From Start	
Fisheries Beacon	Leave to PORT
Mark "X"	Leave to STBD
Fisheries Beacon	Leave to STBD
Mark "X"	Leave to STBD
Fisheries Beacon	Leave to STBD
Woody Point Yellow	Leave to STBD
Fisheries Beacon	Leave to STBD
To the FINISH	

Monohull Div. 2 and Multihull Div. 2

From Start	
Fisheries Beacon	Leave to PORT
Mark "X"	Leave to STBD
Fisheries Beacon	Leave to STBD
Mark "X"	Leave to STBD
Fisheries Beacon	Leave to STBD
To the FINISH	

COURSE 14 – NUMERAL PENNANTS 1 over 4

Monohull Div. 1 and Multihull Div. 1

From Start
 Fisheries Beacon Leave to PORT
 Mark "X" Leave to PORT
 Brisbane Road Buoy Leave to PORT
 Mark "X" Leave to STBD
 Woody Point Yellow Leave to PORT
 Fisheries Beacon Leave to STBD
 To the FINISH

Monohull Div. 2 and Multihull Div. 2

From Start
 Fisheries Beacon Leave to PORT
 Mark "X" Leave to PORT
 Brisbane Road Buoy Leave to PORT
 Mark "X" Leave to STBD
 Fisheries Beacon Leave to STBD
 To the FINISH

COURSE 15 – NUMERAL PENNANTS 1 over 5**Monohull Div. 1 and Multihull Div. 1**

From Start
 Fisheries Beacon Leave to PORT
 Woody Point Yellow Leave to STBD
 Mark "X" Leave to STBD
 Fisheries Beacon Leave to STBD
 Woody Point Yellow Leave to STBD
 Mark X Leave to STBD
 Fisheries Beacon Leave to STBD
 To the FINISH

Monohull Div. 2 and Multihull Div. 2

From Start
 Fisheries Beacon Leave to PORT
 Woody Point Yellow Leave to STBD
 Mark "X" Leave to STBD
 Fisheries Beacon Leave to STBD
 Woody Point Yellow Leave to STBD
 Fisheries Beacon Leave to STBD
 To the FINISH

COURSE 16 – NUMERAL PENNANTS 1 over 6**Monohull Div. 1 and Multihull Div. 1**

From Start
 Fisheries Beacon Leave to
 PORT
 Mark "X" Leave to PORT
 Woody Point Yellow Leave to PORT
 Fisheries Beacon Leave to PORT
 Mark "X" Leave to PORT
 Woody Point Yellow Leave to PORT
 Start Buoy Leave to PORT
 Fisheries Beacon Leave to STBD
 To the FINISH

Monohull Div. 2 and Multihull Div. 2

From Start
 Fisheries Beacon Leave to PORT
 Mark "X" Leave to PORT
 Woody Point Yellow Leave to PORT
 Fisheries Beacon Leave to PORT
 Mark "X" Leave to PORT
 Start Buoy Leave to PORT
 Fisheries Beacon Leave to STBD
 To the FINISH